

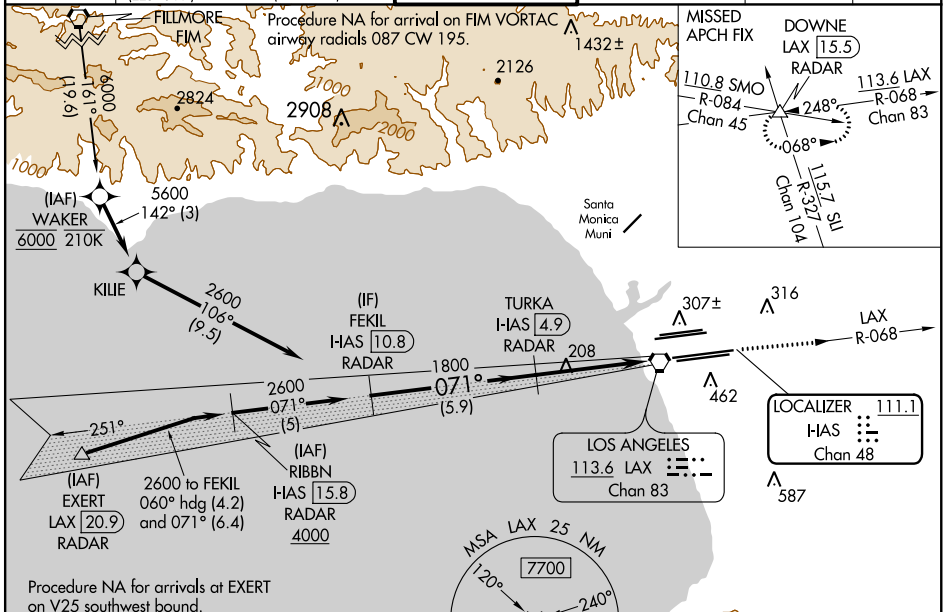
LOC/DME HAS 111.1 Chan 48	APP CRS 071°	Rwy Idg 7L 7R 11259 11095 TDZE 128 128 Apt Elev 128 128
---	------------------------	--

ILS or LOC RWY 7L

LOS ANGELES INTL (LAX)

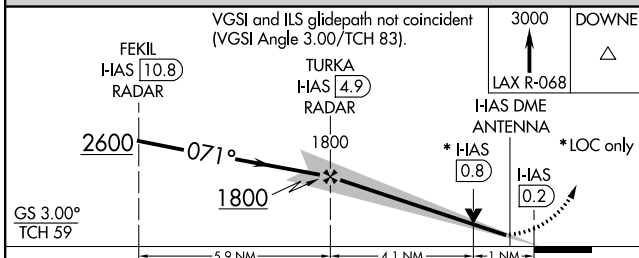
From FIM VORTAC: RNAV 1-GPS required. DME or RADAR required.	MALSR Rwy 7L	MALSR Rwy 7R	MISSED APPROACH: Climb to 3000 on LAX VORTAC R-068 to DOWNE INT/LAX 1.5.5 DME/RADAR and hold.
Simultaneous approach authorized. Autopilot coupled approach NA below 925. Inop table does not apply to Sidestep 7R Cats A and B.			

D-ATIS ARR 133.8 DEP 135.65	SOCAL APP CON 124.3 363.2 124.9 269.0 (APCH FM WEST) (090°-224°) 124.5 235.975 128.5 360.7 (225°-044°) (045°-089°)	LOS ANGELES TOWER N 133.9 239.3 S 120.95 379.1	GND CON N 121.65 327.0 S 121.75 327.0 W 121.4 327.0	CLNC DEL 120.35 327.0	CPDLC
---	--	--	--	---	-------

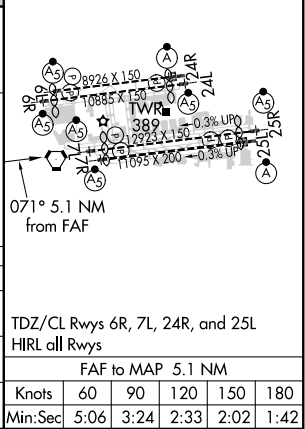


Procedure NA for arrivals at EXERT on V25 southwest bound.

ELEV 128	D TDZE 7L 128	TDZE 7R 128
----------	----------------------	-------------



CATEGORY	A	B	C	D
S-ILS 7L	336/18 208 (300-½)			
S-LOC 7L	520/24	392 (400-½)	520/35	392 (400-¾)
SIDESTEP 7R	520/55 392 (400-1)			520-1½ 392 (400-1½)



SW-3, 25 FEB 2021 to 25 MAR 2021

SW-3, 25 FEB 2021 to 25 MAR 2021