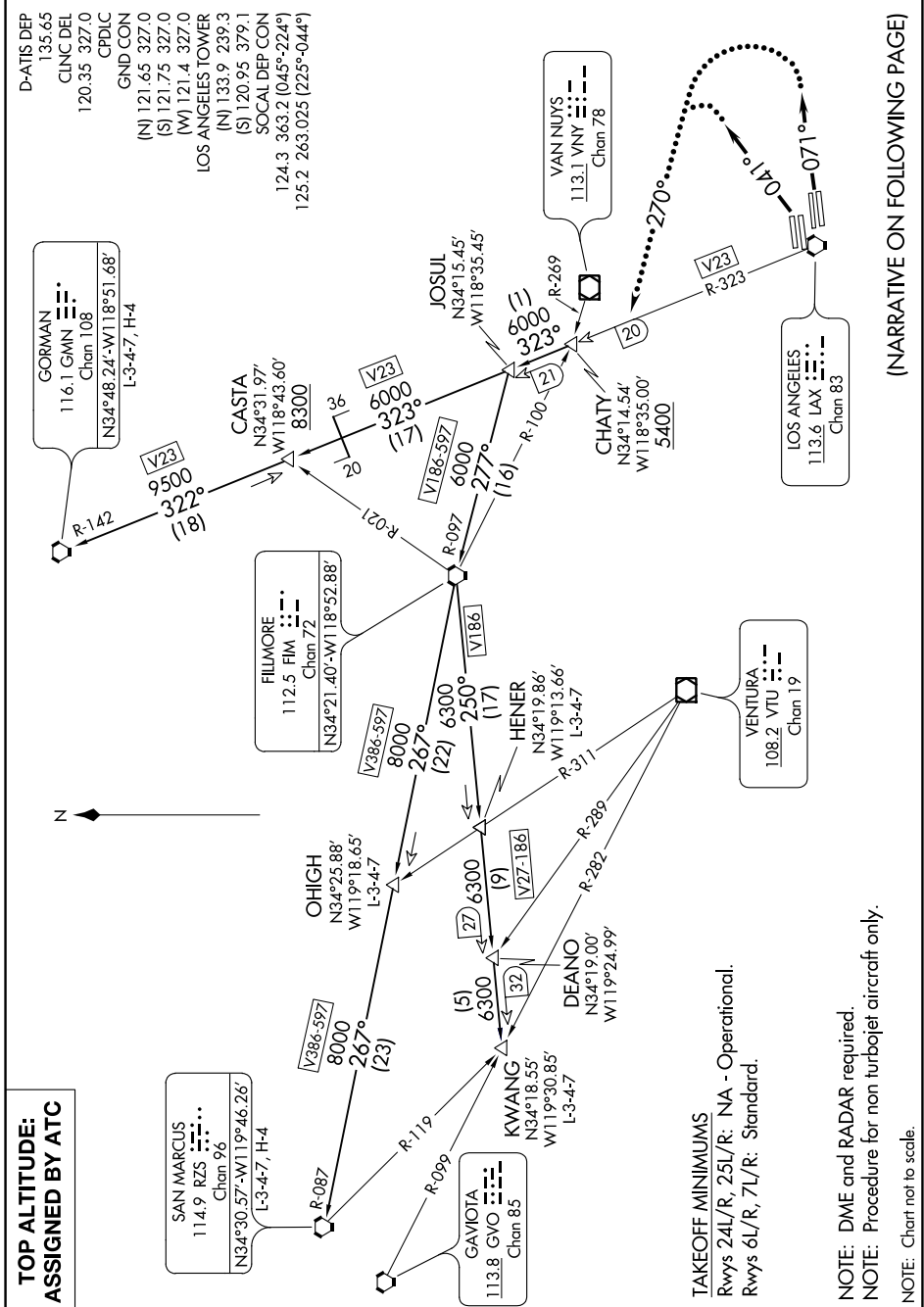


(CHATY5.CHATY) 17229
CHATY FIVE DEPARTURE

AL-237 (FAA)

LOS ANGELES INTL (LAX)
 LOS ANGELES, CALIFORNIA

SW-3, 25 FEB 2021 to 25 MAR 2021



**TOP ALTITUDE:
 ASSIGNED BY ATC**

SAN MARCUS
 114.9 RZS
 N34°30.57'-W119°46.26'
 Chan 96
 L-3-4-7, H-4

V386-597
 8000
 267°
 (23)

V386-597
 8000
 267°
 (23)

V386-597
 8000
 267°
 (22)

V23
 9500
 322°
 (18)

V23
 6000
 323°
 (17)

V23
 6000
 323°
 (16)

GAVIOTA
 113.8 GVO
 N34°18.55'-W119°30.85'
 L-3-4-7
 Chan 85

KWANG
 N34°18.55'-W119°30.85'
 L-3-4-7

DEANO
 N34°19.00'-W119°24.99'

HENER
 N34°19.86'-W119°13.66'
 L-3-4-7

FILLMORE
 112.5 FIM
 N34°21.40'-W118°52.88'
 Chan 72

JOSUL
 N34°15.45'-W118°35.45'

CHATY
 N34°14.54'-W118°35.00'
 5400

VANNUYS
 113.1 VNY
 Chan 78

LOS ANGELES
 113.6 LAX
 Chan 83

VENTURA
 108.2 VTU
 Chan 19

TAKEOFF MINIMUMS

Rwys 24L/R, 25L/R: NA - Operational.
 Rwys 6L/R, 7L/R: Standard.

NOTE: DME and RADAR required.
 NOTE: Procedure for non turbojet aircraft only.

NOTE: Chart not to scale.

(NARRATIVE ON FOLLOWING PAGE)

(CHATY5.CHATY) 27APR17
CHATY FIVE DEPARTURE

LOS ANGELES, CALIFORNIA
 LOS ANGELES INTL (LAX)

SW-3, 25 FEB 2021 to 25 MAR 2021