

WAAS CH 53305 W09A	APP CRS 094°	Rwy ldg TDZE Apt Elev	5350 19 19
--	------------------------	-----------------------------	---------------------------------------

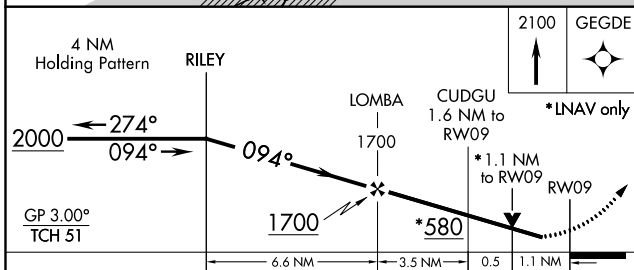
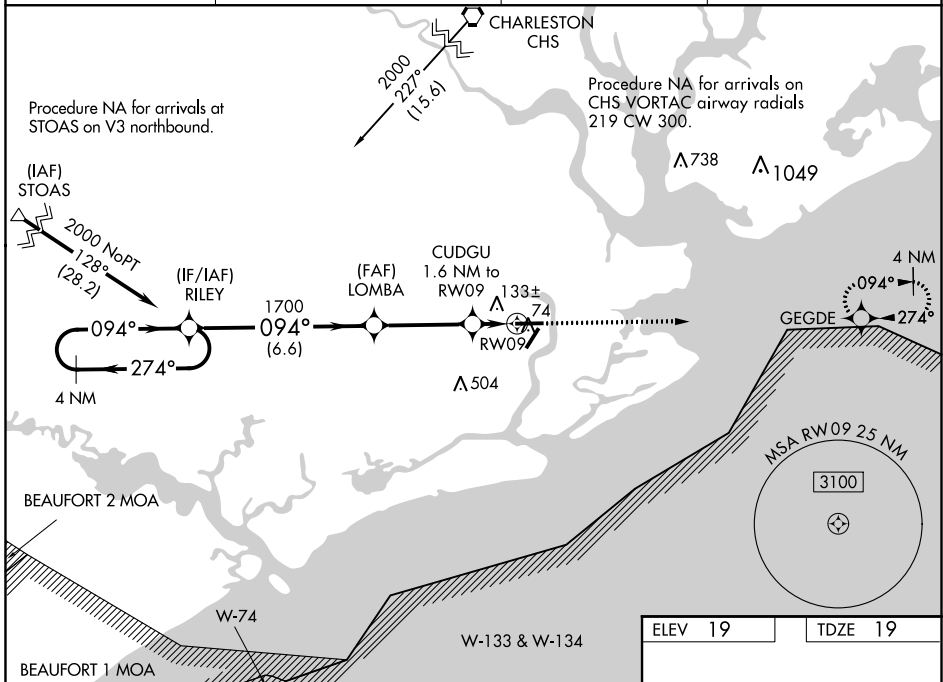
RNAV (GPS) RWY 9

CHARLESTON EXECUTIVE (JZI)

▼ For uncompensated Baro-VNAV systems, LNAV/VNAV NA below -15°C (5°F) or above 43°C (109°F). DME/DME RNP-0.3 NA. Visibility reduction by helicopters NA. Baro-VNAV and **▲** VDP NA when using Charleston AFB/Intl altimeter setting. When local altimeter setting not received, use Charleston AFB/Intl altimeter setting and increase all DA 32 feet and all MDA 40 feet; increase LNAV Cat C and D visibility 1/2 mile.

MISSED APPROACH: Climb to 2100 direct GEGDE and hold.

AWOS-3 123.775	CHARLESTON APP CON 120.7 306.925	CLNC DEL 119.85	UNICOM 122.8 (CTAF) ①
--------------------------	--	---------------------------	--



ELEV 19	TDZE 19																				
<table border="1"> <tr> <td>4 NM Holding Pattern</td> <td>RILEY</td> <td>LOMBA</td> <td>CUDGU</td> <td>GEGDE</td> </tr> <tr> <td>2000</td> <td>1700</td> <td>1.6 NM to RW09</td> <td>2100</td> <td></td> </tr> <tr> <td>GP 3.00° TCH 51</td> <td></td> <td></td> <td></td> <td></td> </tr> <tr> <td></td> <td>6.6 NM</td> <td>3.5 NM</td> <td>0.5</td> <td>1.1 NM</td> </tr> </table>		4 NM Holding Pattern	RILEY	LOMBA	CUDGU	GEGDE	2000	1700	1.6 NM to RW09	2100		GP 3.00° TCH 51						6.6 NM	3.5 NM	0.5	1.1 NM
4 NM Holding Pattern	RILEY	LOMBA	CUDGU	GEGDE																	
2000	1700	1.6 NM to RW09	2100																		
GP 3.00° TCH 51																					
	6.6 NM	3.5 NM	0.5	1.1 NM																	
CATEGORY	A	B	C	D																	
LPV DA		219-3/4	200 (200-3/4)																		
LNAV/VNAV DA		314-1	295 (300-1)																		
LNAV MDA	400-1	381 (400-1)	400-1 1/8	381 (400-1 1/8)																	
CIRCLING	440-1 421 (500-1)	480-1 461 (500-1)	480-1 1/2 461 (500-1 1/2)	580-2 561 (600-2)																	
MIRL Rwy 4-22 ①		HIRL Rwy 9-27 ①																			

SE-2, 25 FEB 2021 to 25 MAR 2021

SE-2, 25 FEB 2021 to 25 MAR 2021