

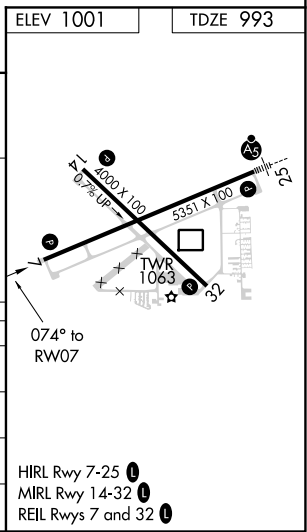
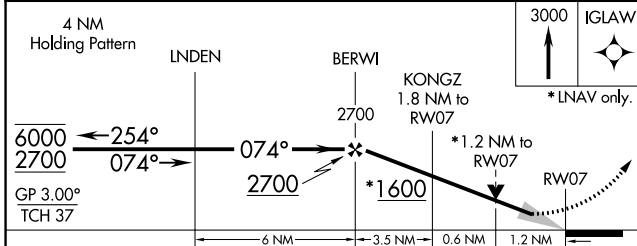
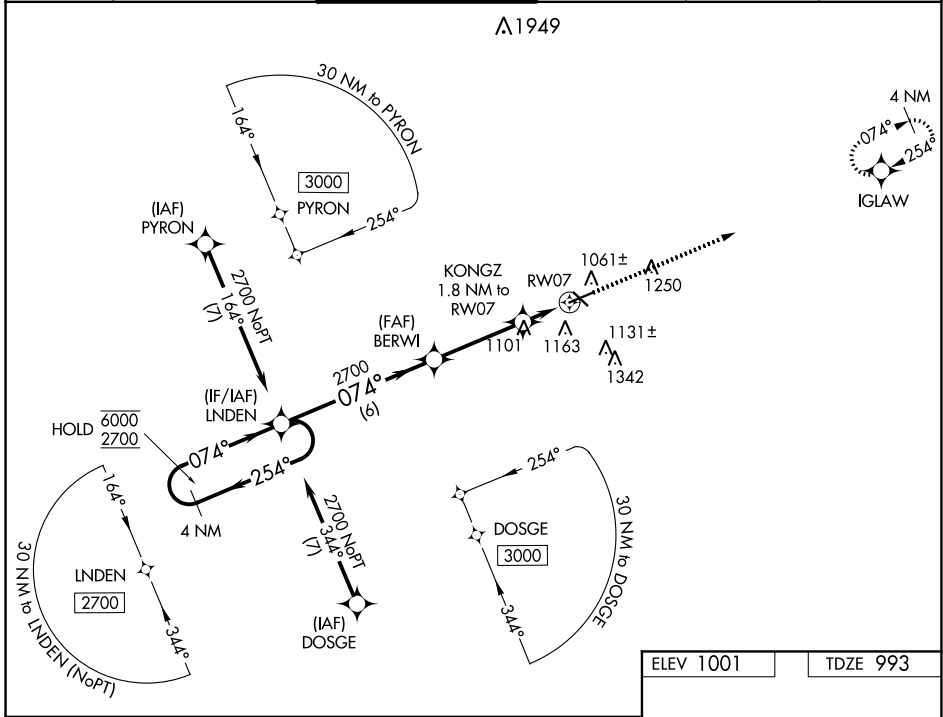
WAAS CH <b>62841</b> <b>W07A</b>	APP CRS <b>074°</b>	Rwy Idg TDZE Apt Elev	<b>5351</b> <b>993</b> <b>1001</b>
--	------------------------	-----------------------------	--

# RNAV (GPS) RWY 7

JACKSON COUNTY-REYNOLDS FIELD (JXN)

RNP APCH.	For uncompensated Baro-VNAV systems, LNAV/VNAV NA below -23°C or above 54°C.	MISSED APPROACH: Climb to 3000 direct IGLAW and hold.
-----------	--	---

ATIS <b>125.725</b>	GREAT LAKES APP CON * <b>127.3 335.575</b>	JACKSON TOWER * <b>128.475 (CTAF) 0 257.8</b>	GND CON <b>121.9</b>	CLNC DEL <b>121.9</b>	UNICOM <b>122.95</b>
------------------------	---	--	-------------------------	--------------------------	-------------------------



CATEGORY	A	B	C	D
LPV DA		1258-7/8	265 (300-7/8)	
LNAV/VNAV DA		1292-7/8	299 (300-7/8)	
LNAV MDA	1400-1	407 (400-1)	1400-1 1/8	407 (400-1 1/8)
CIRCLING	1480-1	479 (500-1)	1660-1 3/4 659 (700-1 3/4)	1660-2 659 (700-2)

- HIRL Rwy 7-25
- MIRL Rwy 14-32
- REIL Rwy 7 and 32

EC-1, 25 FEB 2021 to 25 MAR 2021

EC-1, 25 FEB 2021 to 25 MAR 2021