

WAAS CH 86527 W14A	APP CRS 140°	Rwy Idg TDZE Apt Elev	4000 996 1001
--	------------------------	-----------------------------	--

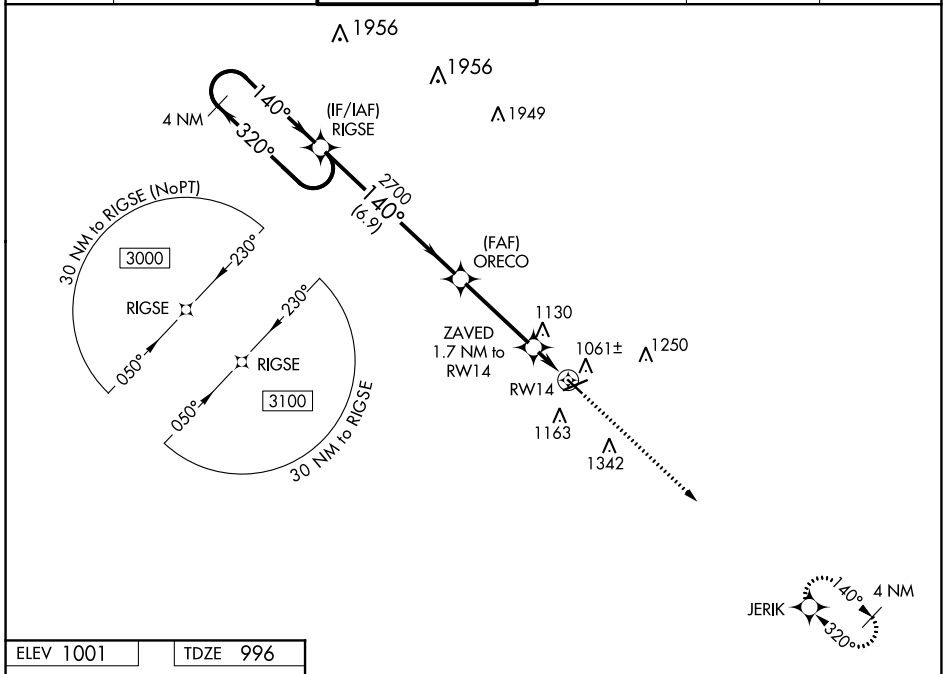
RNAV (GPS) RWY 14

JACKSON COUNTY-REYNOLDS FIELD (JXN)

For uncompensated Baro-VNAV systems, LNAV/VNAV NA below -21°C (-5°F) or above 54°C (130°F). Rwy 14 helicopter visibility reduction below ¾ SM NA. DME/DME RNP-0.3 NA.

MISSED APPROACH: Climb to 3100 direct JERIK and hold.

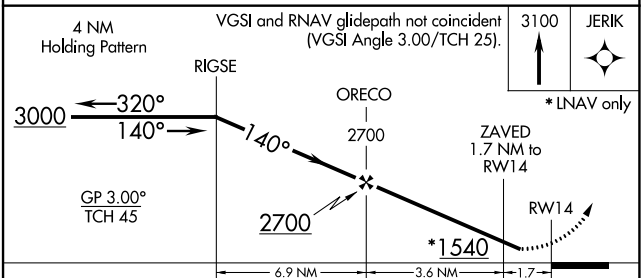
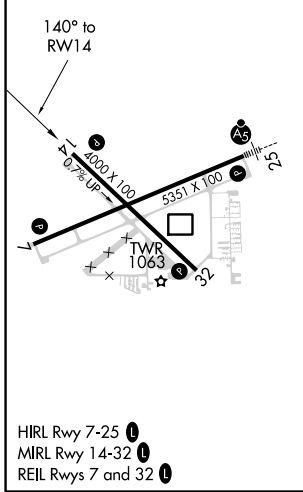
ATIS 125.725	GREAT LAKES APP CON * 127.3 335.575	JACKSON TOWER * 128.475(CTAF) 257.8	GND CON 121.9	CLNC DEL 121.9	UNICOM 122.95
------------------------	---	---	-------------------------	--------------------------	-------------------------



EC-1, 25 FEB 2021 to 25 MAR 2021

EC-1, 25 FEB 2021 to 25 MAR 2021

ELEV 1001	TDZE 996
-----------	----------



CATEGORY	A	B	C	D
LPV DA		1345-1¼	349 (400-1¼)	
LNAV/VNAV DA		1463-1½	467 (500-1½)	
LNAV MDA	1380-1	384 (400-1)	1380-1½	384 (400-1½)
<input checked="" type="checkbox"/> CIRCLING	1480-1	479 (500-1)	1660-1¾ 659 (700-1¾)	1660-2 659 (700-2)