

# KNIGHTS TWO DEPARTURE

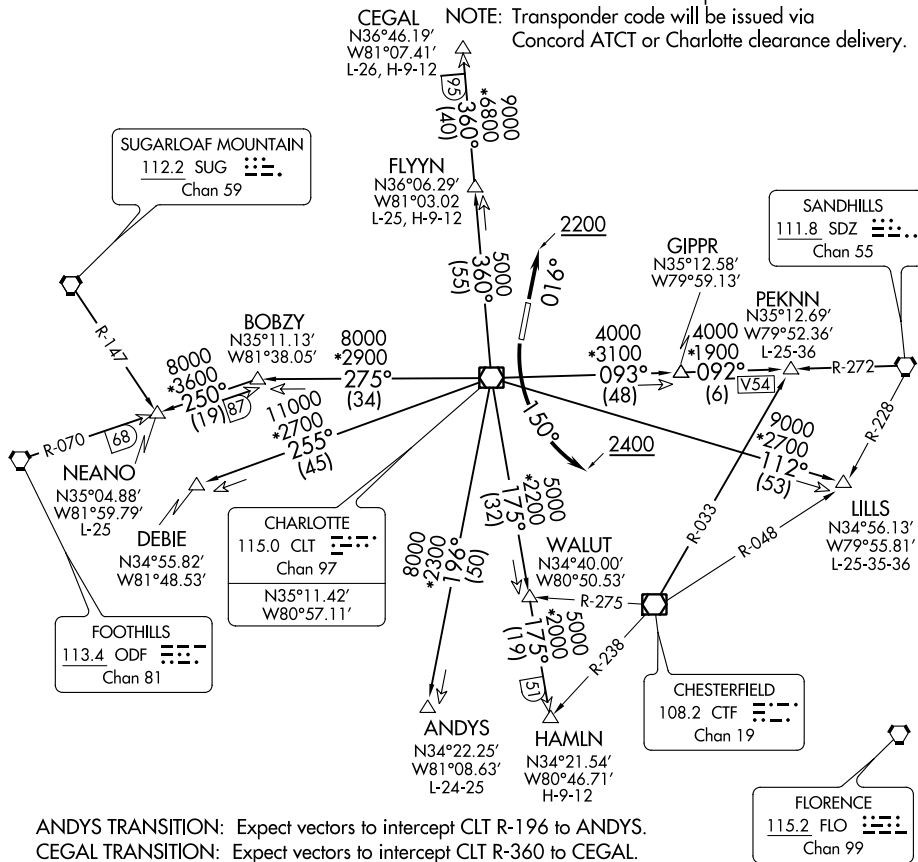
**TOP ALTITUDE:  
3000**

ATIS ★  
133.675  
CLNC DEL  
118.55  
CLNC DEL (when twr closed)  
127.25  
GND CON  
121.85  
CONCORD TOWER ★  
134.65 (CTAF)  
UNICOM  
122.95  
CHARLOTTE DEP CON  
128.325 307.8

### TAKEOFF MINIMUMS

Rwy 2: Standard.  
Rwy 20: 300-1¼ or standard with minimum climb of 204' per NM to 1000.  
Or alternatively, with standard takeoff minimums and a normal 200' per NM climb gradient, takeoff must occur no later than 1200' prior to DER.

NOTE: For propeller aircraft only.  
NOTE: RADAR and DME required.  
NOTE: Turboprops: Operate in a manner that will result in best forward speed and climb rate.  
NOTE: Transponder code will be issued via Concord ATCT or Charlotte clearance delivery.



ANDYS TRANSITION: Expect vectors to intercept CLT R-196 to ANDYS.  
 CEGAL TRANSITION: Expect vectors to intercept CLT R-360 to CEGAL.  
 DEBIE TRANSITION: Expect vectors to intercept CLT R-255 to DEBIE.  
 FLYYN TRANSITION: Expect vectors to intercept CLT R-360 to FLYYN.  
 HAMLN TRANSITION: Expect vectors to intercept CLT R-175 to HAMLN.  
 LILLS TRANSITION: Expect vectors to intercept CLT R-112 to LILLS.  
 NEANO TRANSITION: Expect vectors to intercept CLT R-275 to BOBZY then ODF R-070 to NEANO.  
 PEKNN TRANSITION: Expect vectors to intercept CLT R-093 to GIPPR then SDZ R-272 to PEKNN.

(NARRATIVE ON FOLLOWING PAGE)

NOTE: Chart not to scale.

SE-2, 25 FEB 2021 to 25 MAR 2021

SE-2, 25 FEB 2021 to 25 MAR 2021

# KNIGHTS TWO DEPARTURE