

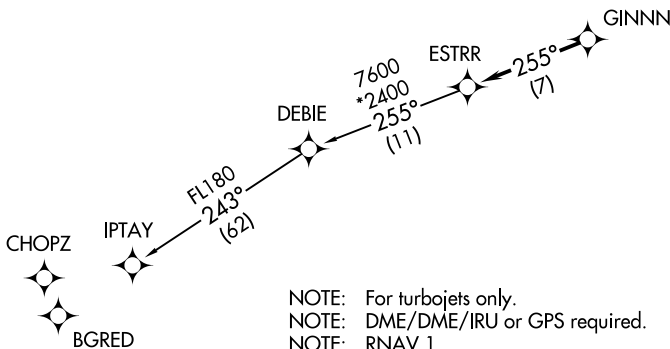
# ESTRR FOUR DEPARTURE (RNAV)

ATIS★  
 133.675  
 CLNC DEL  
 118.55  
 CLNC DEL (when twr closed)  
 127.25  
 GND CON  
 121.85  
 CONCORD TOWER★  
 134.65 (CTAF)  
 UNICOM  
 122.95  
 CHARLOTTE DEP CON  
 128.325 307.8

**TOP ALTITUDE:  
3000**

### TAKEOFF MINIMUMS

Rwy 2: Standard.  
 Rwy 20: Standard with minimum climb of 320' per NM to 2400.



- NOTE: For turbojets only.
- NOTE: DME/DME/IRU or GPS required.
- NOTE: RNAV 1.
- NOTE: RADAR required.
- NOTE: If unable to accept climb rates, advise ATC on initial contact.
- NOTE: Upon reaching 10000 MSL, accelerate to and maintain 280K, if unable advise ATC.

NOTE: Chart not to scale.

SE-2, 25 FEB 2021 to 25 MAR 2021

SE-2, 25 FEB 2021 to 25 MAR 2021



### DEPARTURE ROUTE DESCRIPTION

TAKEOFF RWY 2: Climb heading 016° to 2200, thence. . . .

TAKEOFF RWY 20: Climbing left turn heading 150° to 2400, thence. . . .

. . . .on heading assigned by ATC, expect RADAR vectors to GINNN, then on track 255° to ESTRR, then on IPTAY transition. Maintain 3000, expect clearance to filed altitude within 10 minutes after departure.

IPTAY TRANSITION (ESTRR4.IPTAY)

# ESTRR FOUR DEPARTURE (RNAV)

(ESTRR4.ESTRR) 03JAN19