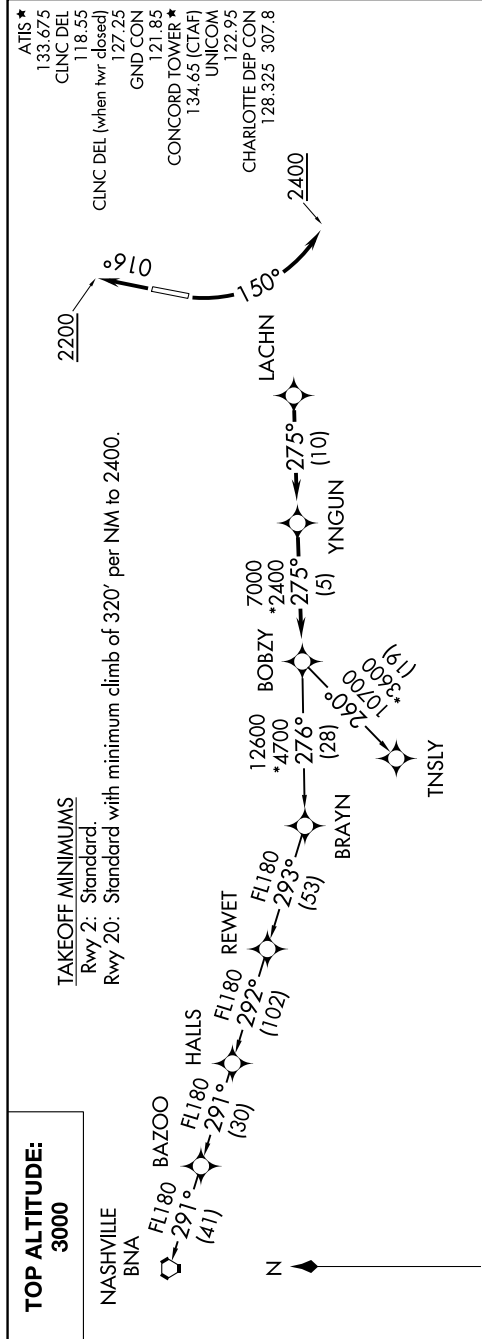


BOBZY FOUR DEPARTURE (RNAV)

SE-2, 25 FEB 2021 to 25 MAR 2021



TOP ALTITUDE:
3000

TAKEOFF MINIMUMS

Rwy 2: Standard.
Rwy 20: Standard with minimum climb of 320' per NM to 2400.

ATIS *
133.675
CLINC DEL
118.55
127.25
GND CON
121.85
CONCORD TOWER *
134.65 (CTAF)
UNICOM
122.95
CHARLOTTE DEP CON
128.325 307.8

CLINC DEL (when hwr closed)

▼ DEPARTURE ROUTE DESCRIPTION

TAKEOFF RWY 2: Climb heading 016° to 2200, thence. . . .

TAKEOFF RWY 20: Climbing left turn heading 150° to 2400, thence. . . .

. . . on heading assigned by ATC, expect RADAR vectors to LACHN, then on depicted route to BOBZY, then on assigned transition. Maintain 3000. Expect clearance to filed altitude within 10 minutes after departure.

NASHVILLE TRANSITION (BOBZY4.BNA)
TNSLY TRANSITION (BOBZY4.TNSLY)

NOTE: For turbojets only.
NOTE: DME/DME/IRU or GPS required.
NOTE: RNAV 1.
NOTE: RADAR required.
NOTE: If unable to accept climb rates, advise ATC on initial contact.
NOTE: Upon reaching 10000 MSL, accelerate to and maintain 280K, if unable advise ATC.

NOTE: Chart not to scale.

BOBZY FOUR DEPARTURE (RNAV)

SE-2, 25 FEB 2021 to 25 MAR 2021