

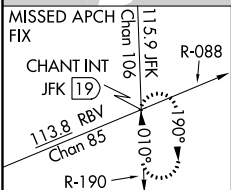
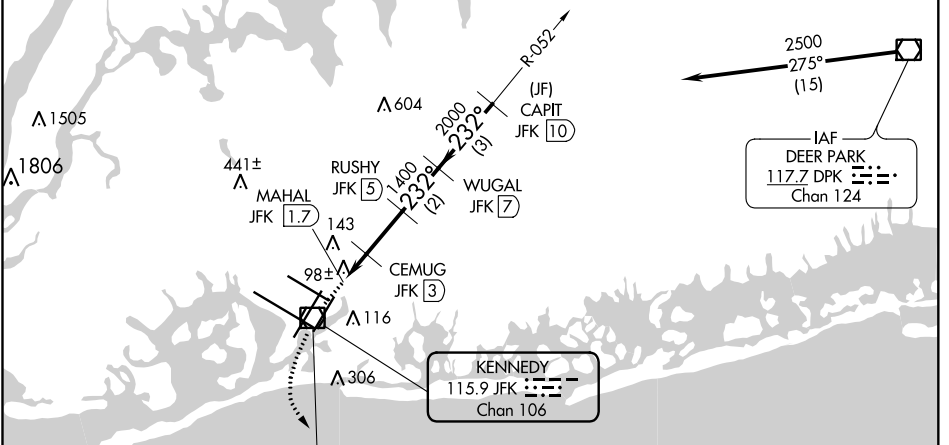
VOR/DME JFK	APP CRS	Rwy Idg	8400
115.9	232°	TDZE	12
Chan 106		Apt Elev	13

VOR RWY 22L

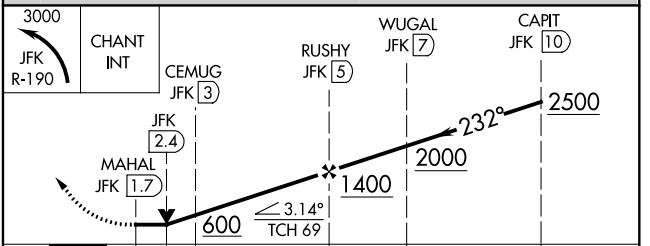
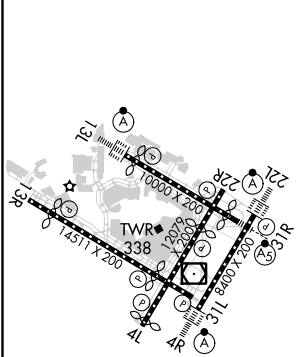
JOHN F KENNEDY INTL (JFK)

DME required.	ALSF-2	MISSED APPROACH: Climbing left turn to 3000 on JFK VOR/DME R-190 to CHANT INT/19 DME and hold.
▼ Rwy 22L helicopter visibility reduction below 1 SM NA. For inop ALS, increase S-22L Cat A/B visibility to RVR 5500.	A	

D-ATIS (ARR/DEP) (ARR-NE) (ARR-SW)	NEW YORK APP CON	KENNEDY TOWER	GND CON	CLNC DEL	CPDLC
128.725 117.7 115.4	128.125 269.0	Rwys 4R/22L and 13L/31R 119.1 281.55 Rwys 4L/22R and 13R/31L 123.9 281.55	121.9 348.6	135.05 348.6	



ELEV 13	D	TDZE 12
---------	----------	---------



CATEGORY	A	B	C	D
S-22L	440/40	428 (500-¾)		440/50 428 (500-1)
C CIRCLING	640-1	627 (700-1)	680-1¾ 667 (700-1¾)	680-2 667 (700-2)

REIL Rwy 4L
RLS Rwys 13L and 13R
HIRL all Rwys
TDZ/CL Rwys 4L, 4R, 13L, 22L and 31R

NE-2, 25 FEB 2021 to 25 MAR 2021

NE-2, 25 FEB 2021 to 25 MAR 2021