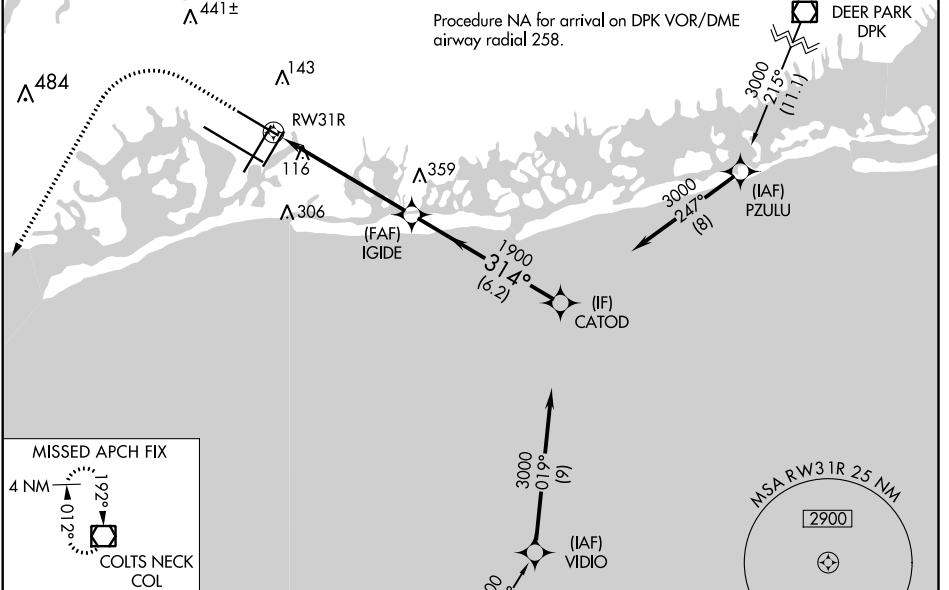


WAAS CH 45519 W31B	APP CRS 314°	Rwy Idg 8486 TDZE 13 Apt Elev 13
----------------------------------------	------------------------	-------------------------------------------------------------

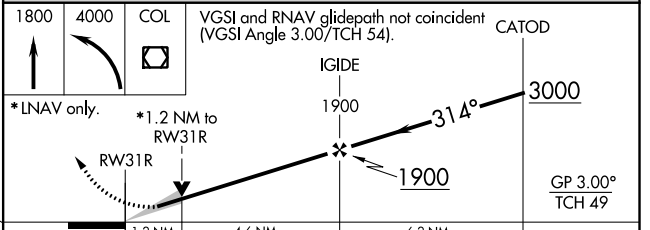
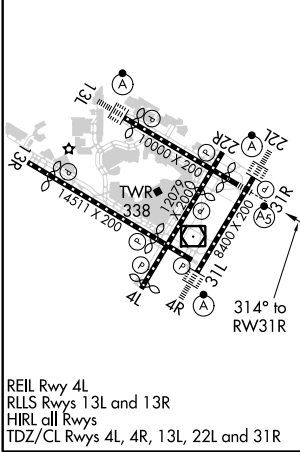
RNAV (GPS) Y RWY 31R

JOHN F KENNEDY INTL (JFK)

RNP APCH.		MALSR		MISSED APPROACH: Climb to 1800 then climbing left turn to 4000 direct COL VOR/DME and hold.				
Simultaneous approach authorized. For uncompensated Baro-VNAV systems, LNAV/VNAV NA below -12°C or above 54°C. Minimum altitude at CATOD 2000 when authorized by ATC. Use of FD or AP required during simultaneous operations. LNAV procedure NA during simultaneous operations. For inop ALS, increase LNAV/VNAV all Cats visibility to RVR 5500.		(ARR/DEP) (ARR-NE) (ARR-SW) 128.725 117.7 115.4		NEW YORK APP CON 128.125 269.0	KENNEDY TOWER Rwys 4R/22L and 13L/31R 119.1 281.55 Rwys 4L/22R and 13R/31L 123.9 281.55	GND CON 121.9 348.6	CLNC DEL 135.05 348.6	CPDLC



ELEV 13	D	TDZE 13
---------	----------	---------



CATEGORY	A	B	C	D
LPV DA		213/18	200 (200-½)	
LNAV/VNAV DA		369/35	356 (400-⅝)	
LNAV MDA	460/24	447 (500-½)	460/45	447 (500-⅞)
C CIRCLING	640-1	627 (700-1)	680-1¾ 667 (700-1¾)	680-2 667 (700-2)

NE-2, 25 FEB 2021 to 25 MAR 2021

NE-2, 25 FEB 2021 to 25 MAR 2021