

LOC/DME I-JOC 109.5 Chan 32	APP CRS 221°	Rwy Idg 7795 TDZE 13 Apt Elev 13
-------------------------------------------------	------------------------	-------------------------------------------------------------

ILS or LOC RWY 22R

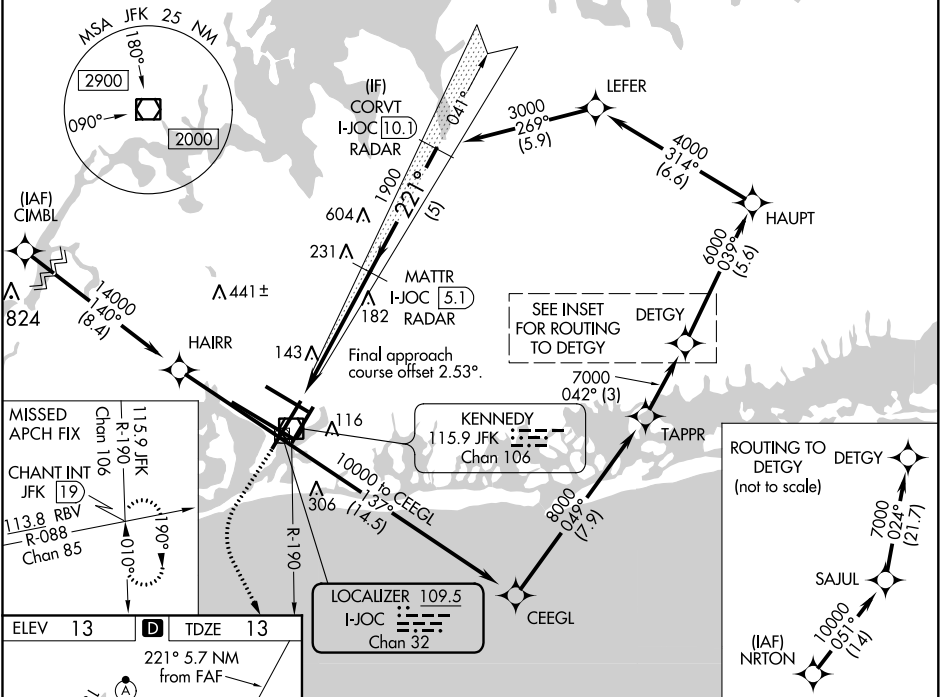
JOHN F KENNEDY INTL (JFK)

RNAV 1-GPS or RADAR required for procedure entry.
From CIMBL, NRTON: RNAV 1-GPS required. DME or RADAR required.

MISSED APPROACH: Climb to 2000 then climbing left turn to 4000 on JFK VOR/DME R-190 to CHANT INT and hold.

Simultaneous approach authorized.

D-ATIS (ARR/DEP) (ARR-NE) (ARR-SW) 128.725 117.7 115.4	NEW YORK APP CON 128.125 269.0	KENNEDY TOWER Rwys 4R/22L and 13L/31R 119.1 281.55 Rwys 4L/22R and 13R/31L 123.9 281.55	GND CON 121.9 348.6	CLNC DEL 135.05 348.6	CPDLC
---------------------------------------------------------------------	------------------------------------------	-------------------------------------------------------------------------------------------------------------	-------------------------------	---------------------------------	-------



NE-2, 25 FEB 2021 to 25 MAR 2021

NE-2, 25 FEB 2021 to 25 MAR 2021

MISSED APCH FIX
CHAN 106
115.9 JFK
R-190

CHANT INT
JFK (19)
R-088
Chan 85

113.8 RBV
R-088
Chan 85

14000 (8.4)
14000 (8.4)

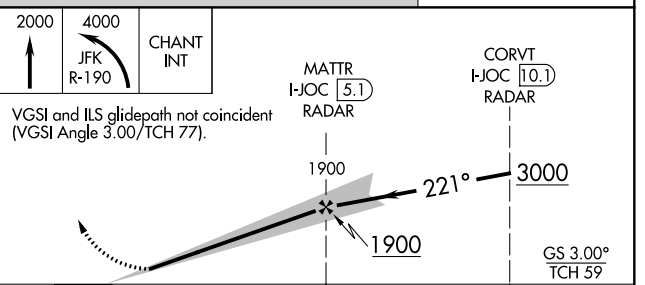
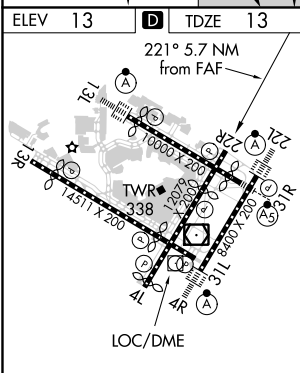
190°
010°

ROUTING TO DETGY
(not to scale)

DETYG
7000 024° (21.7)

SAJUL
10000 051° (11.4)

(IAF) NRTON



REIL Rwy 4L
RLS Rwys 13L and 13R
HIRL all Rwys
TDZ/CL Rwys 4L, 4R, 13L, 22L and 31R
FAF to MAP 5.7 NM

Knots	60	90	120	150	180
Min:Sec	5:42	3:48	2:51	2:17	1:54

CATEGORY	A	B	C	D
S-ILS 22R	263/40 250 (300-3/4)			
S-LOC 22R	460/55	447 (500-1)	460-1 3/8	447 (500-1 3/8)
CIRCLING	640-1	627 (700-1)	680-1 3/4	680-2 667 (700-2)