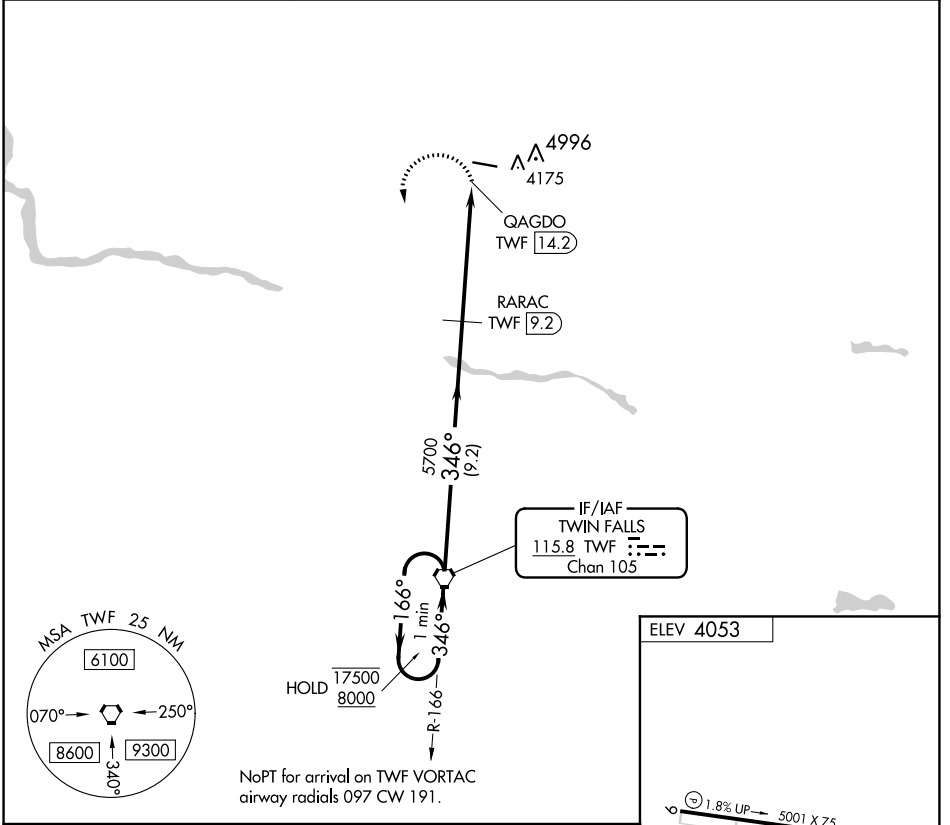


VORTAC TWF 115.8 Chan 105	APP CRS 346°	Rwy Idg TDZE Apt Elev	N/A N/A 4053
---	------------------------	-----------------------------	---

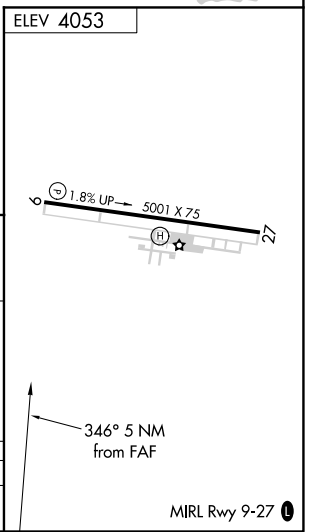
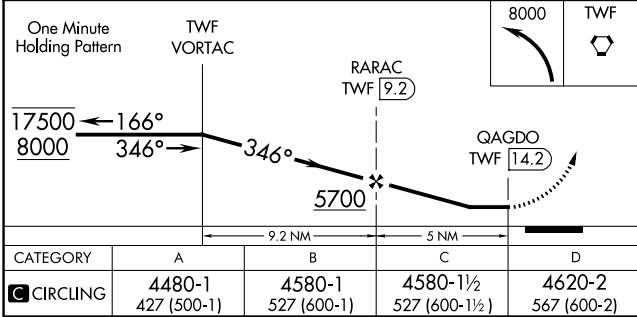
VOR-A
JEROME COUNTY (JER)

DME required.		MISSED APPROACH: Climbing left turn to 8000 direct TWF VORTAC and hold, continue climb-in-hold to 8000.
▽ ▲	Circling NA north of Rwy 9-27.	
ASOS 135.225	TWIN FALLS APP CON* 126.7 353.75	UNICOM 122.8 (CTAF) 0



NW-1, 25 FEB 2021 to 25 MAR 2021

NW-1, 25 FEB 2021 to 25 MAR 2021



CATEGORY	A	B	C	D
C CIRCLING	4480-1 427 (500-1)	4580-1 527 (600-1)	4580-1½ 527 (600-1½)	4620-2 567 (600-2)

MIRL Rwy 9-27 0