

VOR/DME JBR <b>108.6</b> Chan <b>23</b>	APP CRS <b>227°</b>	Rwy Idg TDZE Apt Elev	<b>6200</b> <b>262</b> <b>262</b>
---	------------------------	-----------------------------	---

# VOR RWY 23

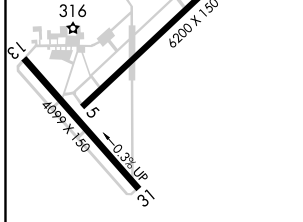
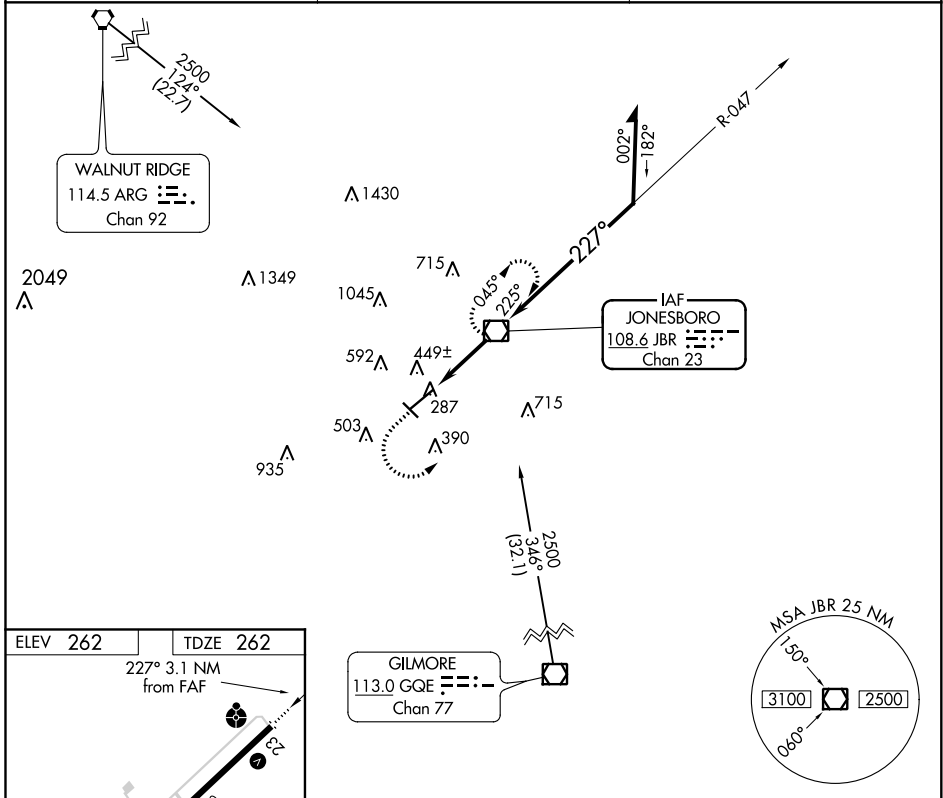
JONESBORO MUNI (JBR)

**⚠** Circling Rwy 31 NA at night. Circling NA northwest of Rwy 5-23. Rwy 23 helicopter visibility reduction below ¼ SM NA. When local altimeter setting not received, use Walnut Ridge altimeter setting and increase all MDAs 60 feet and visibility S-23 Cat C/D ½ SM.

**ODALS**  
⚠

**MISSED APPROACH:** Climb to 2000 then climbing left turn to 2300 direct JBR VOR/DME and hold.

ASOS <b>118.525</b>	MEMPHIS CENTER <b>120.075 289.4</b>	UNICOM <b>123.0 (CTAF)</b>
------------------------	--	-------------------------------

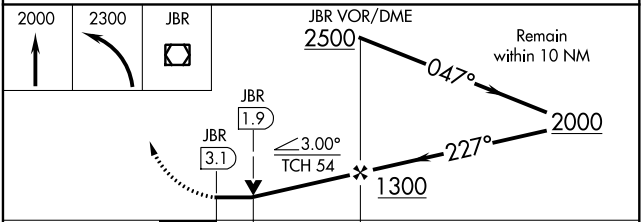


MIRL Rwy 5-23 and 13-31

FAF to MAP 3.1 NM

ELEV 262	TDZE 262
227° 3.1 NM from FAF	
316	
6200 X 150	
4099 X 150	
5	
13	
23	
31	
0.3% UP	

Knots	60	90	120	150	180
Min:Sec	3:06	2:04	1:33	1:14	1:02



CATEGORY	A	B	C	D
S-23	700-¾ 438 (500-¾)		700-1½ 438 (500-1½)	
CIRCLING	740-1 478 (500-1)		740-1½ 478 (500-1½)	820-2 558 (600-2)

SC-1, 25 FEB 2021 to 25 MAR 2021

SC-1, 25 FEB 2021 to 25 MAR 2021