


WAAS CH 65806 W23A	APP CRS 230°	Rwy Idg 6200 TDZE 262 Apt Elev 262
--	------------------------	---

RNAV (GPS) RWY 23

JONESBORO MUNI (JBR)

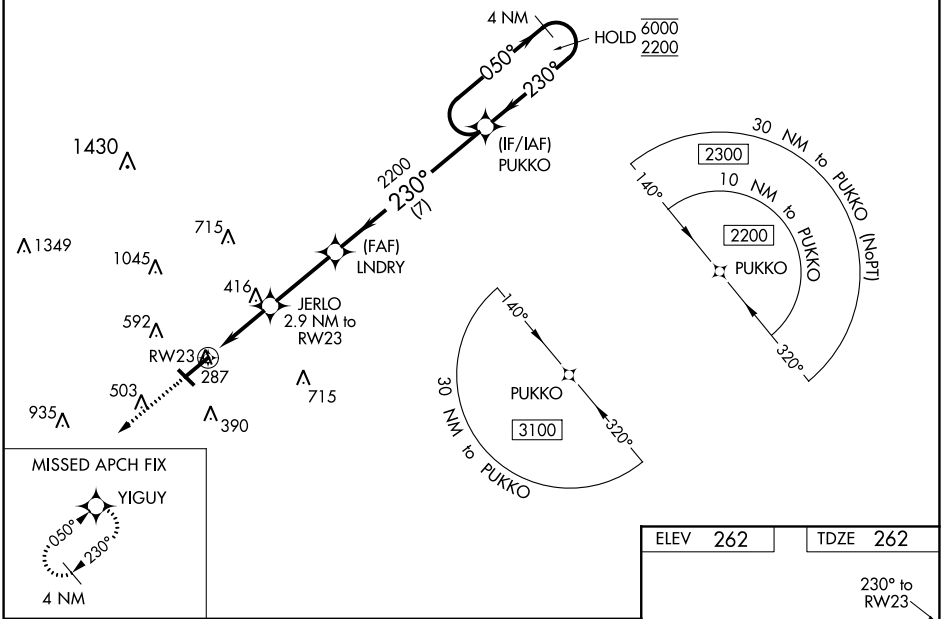
RNP APCH.

⚠ Circling NA northwest of Rwy 5-23. Circling Rwy 31 NA at night. Baro-VNAV and VDP NA when using Walnut Ridge altimeter setting. Rwy 23 helicopter visibility reduction below 3/4 SM NA. For uncompensated Baro-VNAV systems, LNAV/VNAV NA below -12°C or above 54°C. For inop ALS, increase LPV Cat A/B visibility to 3/8 SM. Inop table does not apply to LNAV/VNAV. For inop ALS when using Walnut Ridge altimeter setting, increase LPV Cat A/B visibility to 1 SM. When using Walnut Ridge altimeter setting, inop table does not apply to LNAV/VNAV. When local altimeter setting not received, use Walnut Ridge altimeter setting: increase LPV DA to 600 feet, LNAV/VNAV DA to 630 feet and all visibilities 3/8 SM; increase all MDAs 60 feet and visibility LNAV Cat C/D 1/4 SM.

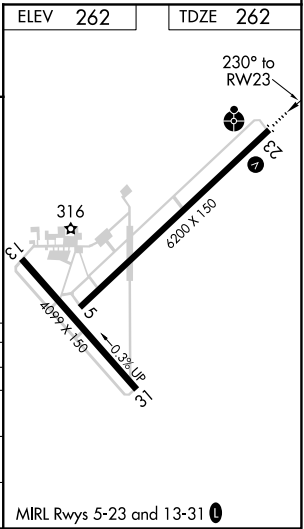
ODALS 


MISSED APPROACH: Climb to 2300 direct YIGUY and hold.

ASOS 118.525	MEMPHIS CENTER 120.075 289.4	UNICOM 123.0 (CTAF) 
------------------------	--	---



2300	YIGUY	JERLO 2.9 NM to RW23	LNDRY 2200	PUKKO	4 NM Holding Pattern
*LNAV only.	*1.2 NM to RW23	*1.220	2200	230°	050° → 6000
				← 230°	← 2200
					GP 3.00° TCH 53
CATEGORY	A	B	C	D	
LPV DA		546-3/4	284 (300-3/4)		
LNAV/VNAV DA		576-7/8	314 (400-7/8)		
LNAV MDA	680-3/4	418 (500-3/4)	680-1	418 (500-1)	
CIRCLING	740-1	478 (500-1)	740-1 1/2	820-2	558 (600-2)



MIRL Rwy 5-23 and 13-31 

SC-1, 25 FEB 2021 to 25 MAR 2021

SC-1, 25 FEB 2021 to 25 MAR 2021