


LOC I-JBR <b>110.15</b>	APP CRS <b>230°</b>	Rwy Idg TDZE Apt Elev	<b>6200</b> <b>262</b> <b>262</b>
----------------------------	------------------------	-----------------------------	---

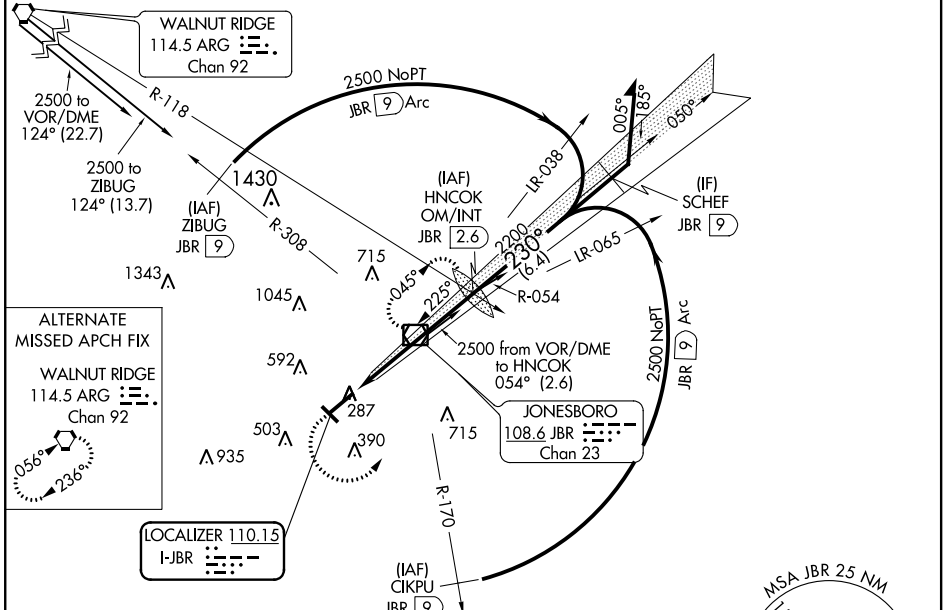
# ILS or LOC RWY 23

JONESBORO MUNI (JBR)

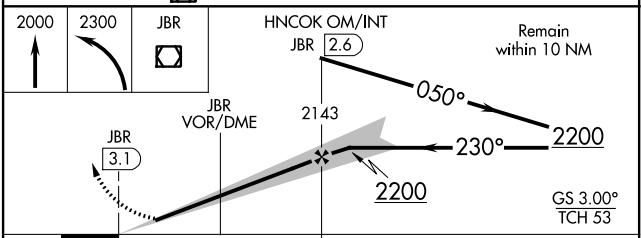
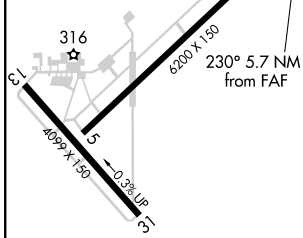
**⚠** Circling NA northwest of Rwy 5-23. Rwy 23 helicopter visibility reduction below 3/4 SM NA. When local altimeter setting not received, use Walnut Ridge altimeter setting; increase DA to 600 feet and visibility 1/8 SM; increase all MDA<sub>s</sub> 60 feet and visibility S-LOC 23 Cat C/D 1/8 SM. For inop ALS, increase S-ILS 23 Cat A/B visibility to 3/8 SM and S-LOC 23 Cat C/D to 1/8 SM. For inop ALS when using Walnut Ridge altimeter setting, increase S-ILS 23 Cat A/B visibility to 1 SM. When using Walnut Ridge altimeter setting, inop table does not apply to S-LOC 23 Cats C/D. Circling Rwy 31 NA at night.

**ODALS**  
  
**MISSED APPROACH:**  
 Climb to 2000 then climbing left turn to 2300 direct JBR VOR/DME and hold.

ASOS <b>118.525</b>	MEMPHIS CENTER <b>120.075 289.4</b>	UNICOM <b>123.0 (CTAF)</b>
------------------------	--	-------------------------------



ELEV 262	TDZE 262
----------	----------



MIRL Rwy 5-23 and 13-31 FAF to MAP 5.7 NM					
Knots	60	90	120	150	180
Min:Sec	5:42	3:48	2:51	2:17	1:54
CATEGORY	A	B	C	D	
S-ILS 23	546-3/4 284 (300-3/4)				
S-LOC 23	720-3/4 458 (500-3/4)	720-1/4 458 (500-1/4)			
CIRCLING	740-1 478 (500-1)		740-1/2 478 (500-1/2)	820-2 558 (600-2)	

SC-1, 25 FEB 2021 to 25 MAR 2021

SC-1, 25 FEB 2021 to 25 MAR 2021