


WAAS CH <b>70626</b> <b>W14A</b>	APP CRS <b>136°</b>	Rwy Idg TDZE Apt Elev	<b>7701</b> <b>27</b> <b>29</b>
--	------------------------	-----------------------------	---------------------------------------

# RNAV (GPS) Z RWY 14

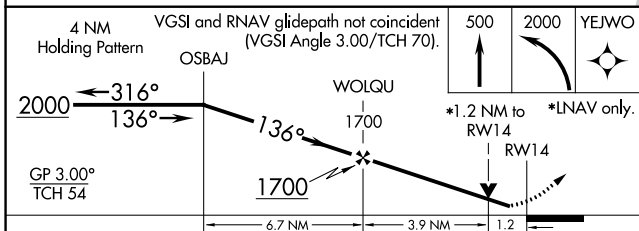
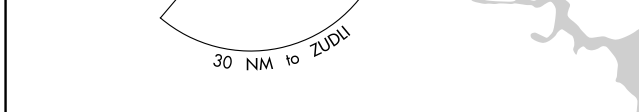
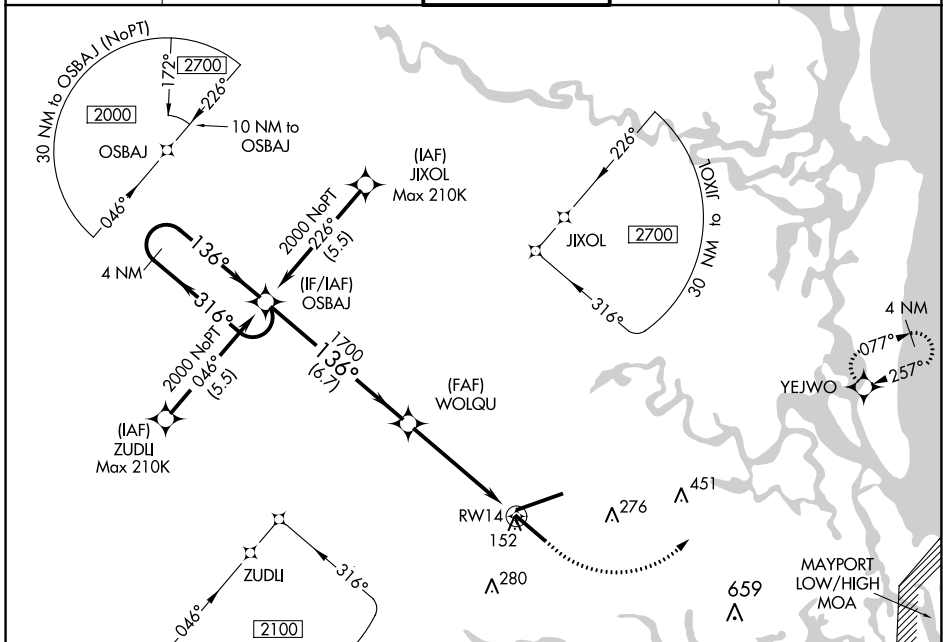
JACKSONVILLE INTL (JAX)

▼ For uncompensated Baro-VNAV systems, LNAV/VNAV NA below -5°C (23°F) or above 54°C (130°F). For inoperative MALSR, increase LNAV/VNAV all Cats visibility to 1 1/8 miles and increase LNAV Cats A/B to 1 mile. DME/DME RNP-0.3 NA. Helicopter visibility reduction below 3/4 SM NA.

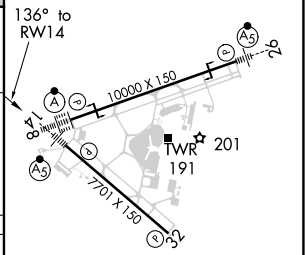
MALSR 

MISSED APPROACH:  
Climb to 500 then climbing left turn to 2000 direct YEJWO and hold.

D-ATIS <b>125.85</b>	JACKSONVILLE APP CON <b>119.0 269.9</b>	JACKSONVILLE TOWER <b>118.3 317.7</b>	GND CON <b>121.9 348.6</b>	CLNC DEL <b>119.5 290.275</b>
-------------------------	--	--	-------------------------------	----------------------------------



ELEV 29	TDZE 27
---------	---------



CATEGORY	A	B	C	D
LPV DA		227-1/2	200 (200-1/2)	
LNAV/VNAV DA		363-3/4	336 (400-3/4)	
LNAV MDA	480-3/4	453 (500-3/4)	480-7/8	453 (500-7/8)
CIRCLING	520-1	491 (500-1)	520-1 1/2	640-2
			491 (500-1 1/2)	611 (700-2)

REIL Rwy 32  
TDZ/CL Rwys 8, 14, and 26  
HIRL Rwys 8-26 and 14-32

SE-3, 25 FEB 2021 to 25 MAR 2021

SE-3, 25 FEB 2021 to 25 MAR 2021