

| | | |
|-------------|----------|--------------|
| APP CRS | Rwy Idg | 10000 |
| 257° | TDZE | 27 |
| | Apt Elev | 29 |

RNAV (RNP) Y RWY 26

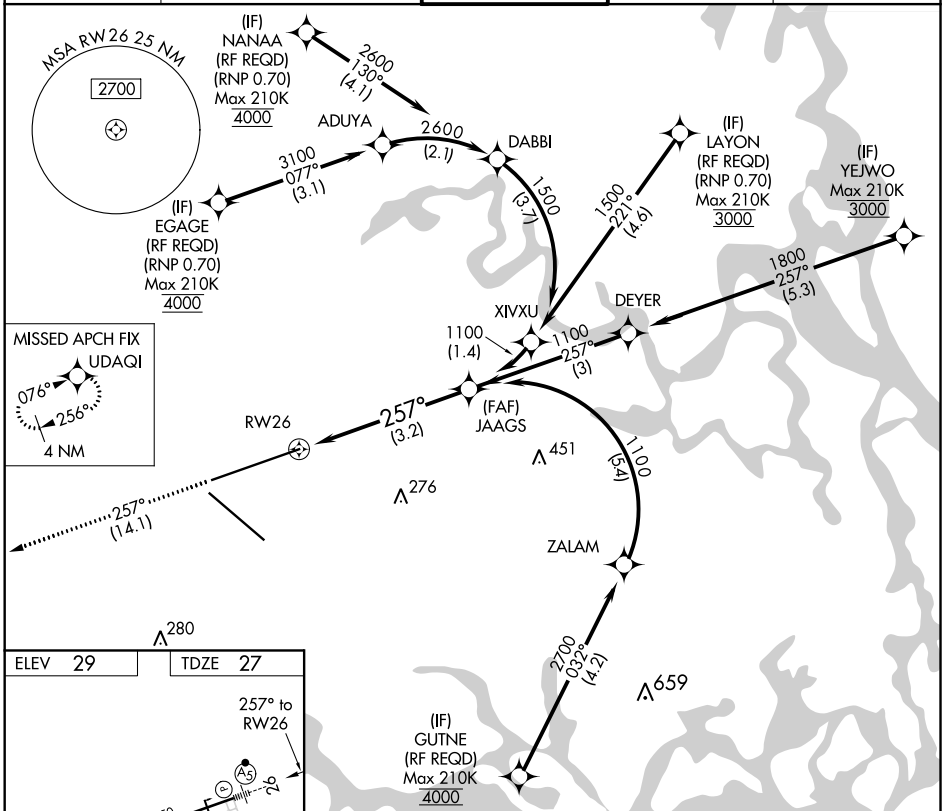
JACKSONVILLE INTL (JAX)

▼ For uncompensated Baro-VNAV systems, procedure NA below -5°C (23°F) or above 54°C (130°F). GPS required. For inoperative MALSR, increase RNP 0.30 all Cats visibility to 1¼ mile.



MISSED APPROACH: Climb to 2000 on track 257° to UDAQI and hold.

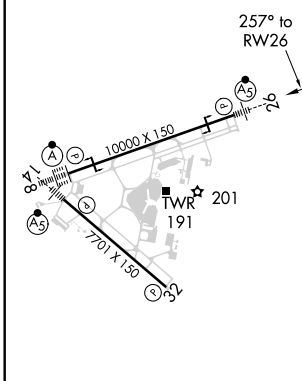
| | | | | |
|---------------|----------------------|--------------------|--------------------|----------------------|
| D-ATIS | JACKSONVILLE APP CON | JACKSONVILLE TOWER | GND CON | CLNC DEL |
| 125.85 | 119.0 269.9 | 118.3 317.7 | 121.9 348.6 | 119.5 290.275 |



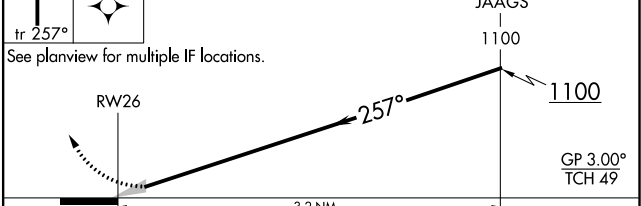
SE-3, 25 FEB 2021 to 25 MAR 2021

SE-3, 25 FEB 2021 to 25 MAR 2021

| | |
|---------|---------|
| ELEV 29 | TDZE 27 |
|---------|---------|



2000 UDAQI VGSi and RNAV glidepath not coincident (VGSi Angle 3.00/TCH 70).



| | | | | |
|-------------|--------|---|-------------|---|
| CATEGORY | A | B | C | D |
| RNP 0.30 DA | 400/40 | | 373 (400-¾) | |

AUTHORIZATION REQUIRED