

WAAS CH 42813 W36A	APP CRS 357°	Rwy Idg TDZE Apt Elev	5500 192 213
--	------------------------	-----------------------------	---

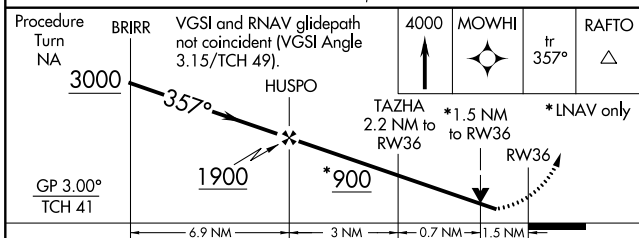
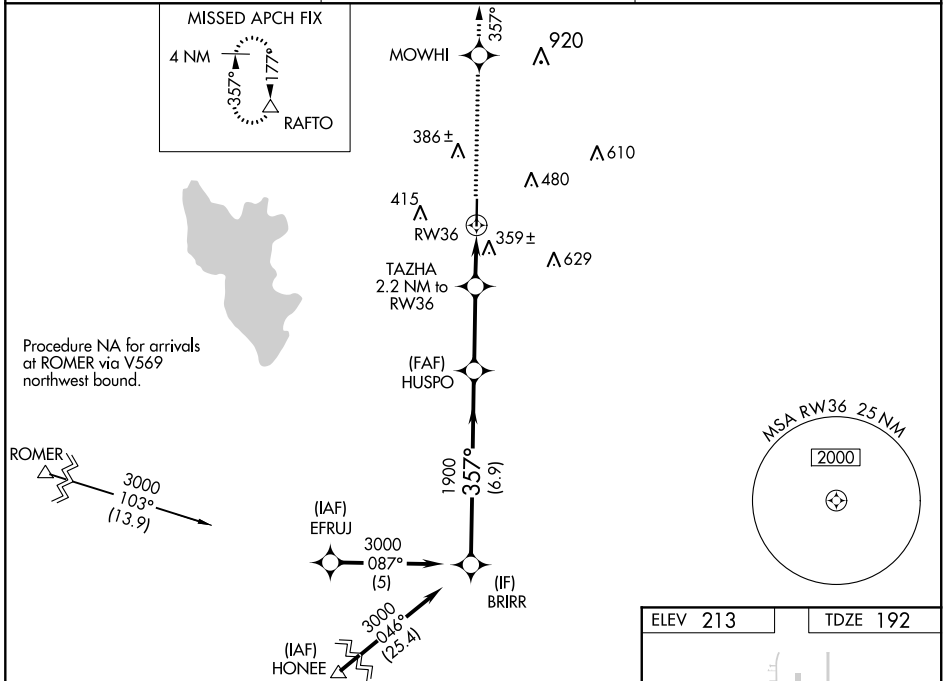
RNAV (GPS) RWY 36

JASPER COUNTY-BELL FIELD (JAS)

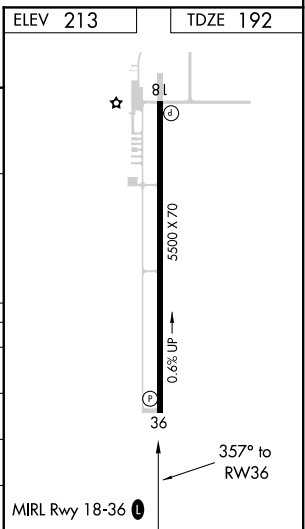
⚠ Baro-VNAV NA when using De Ridder altimeter setting. For uncompensated Baro-VNAV systems, LNAV/VNAV NA below -15°C (5°F) or above 54°C (130°F). DME/DME RNP-0.3 NA. Helicopter visibility reduction below 3/4 SM NA. VDP NA when using De Ridder altimeter setting. When local altimeter setting not received, use De Ridder altimeter setting and increase all DA 85 feet, all MDA 100 feet; increase LPV visibility all Cats and LNAV Cat C 3/8 mile, LNAV/VNAV visibility all Cats and Circling Cat C 1/4 mile.

MISSED APPROACH:
Climb to 4000 direct MOWHI and via track 357° to RAFTO and hold.

AWOS-3 118.375	HOUSTON CENTER 126.95 363.05	UNICOM 122.8 (CTAF) 0
--------------------------	--	---------------------------------



CATEGORY	A	B	C	D
LPV DA	594-1 3/8 402 (400-1 3/8)			NA
LNAV/VNAV DA	675-1 3/4 483 (500-1 3/4)			NA
LNAV MDA	680-1	488 (500-1)	680-1 3/8 488 (500-1 3/8)	NA
CIRCLING	740-1	527 (600-1)	740-1 1/2 527 (600-1 1/2)	NA



SC-5, 25 FEB 2021 to 25 MAR 2021

SC-5, 25 FEB 2021 to 25 MAR 2021