

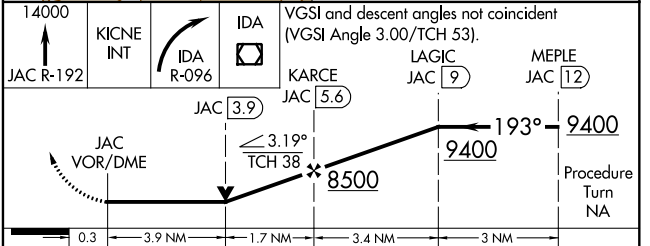
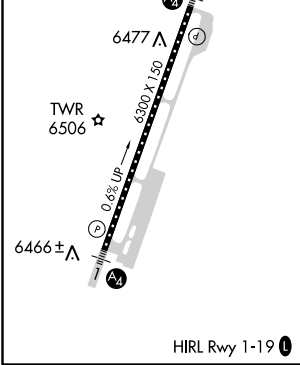
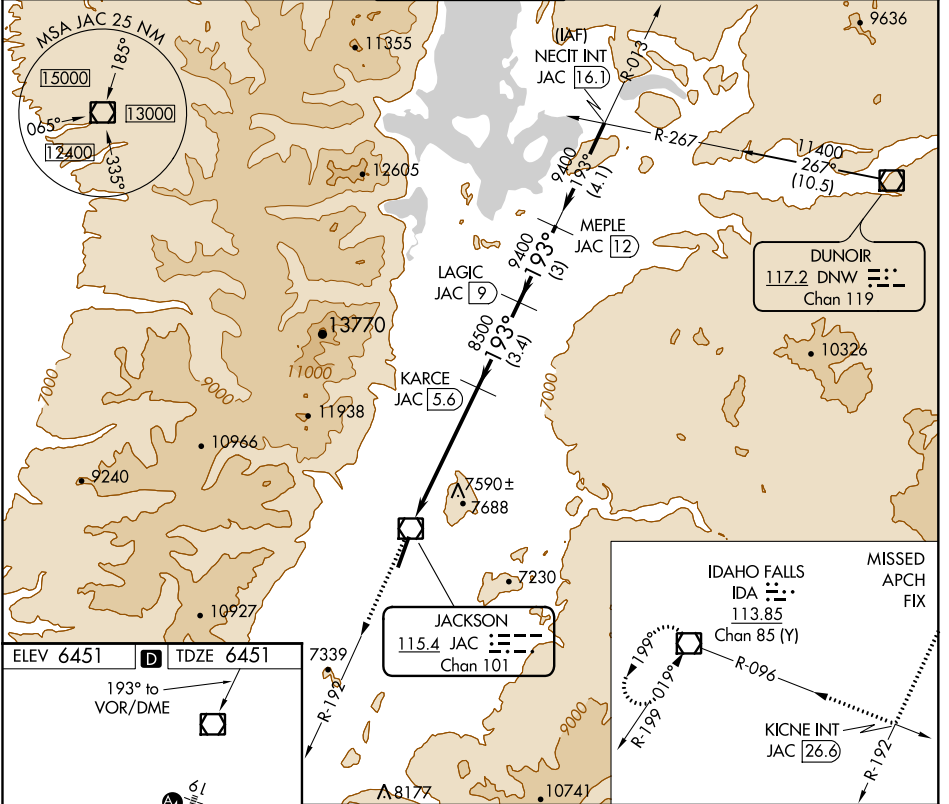
VOR/DME JAC 115.4 Chan 101	APP CRS 193°	Rwy Idg TDZE Apt Elev	6300 6451 6451
--	------------------------	-----------------------------	---

VOR/DME RWY 19

JACKSON HOLE (JAC)

⚠ ⚠ ⚠ -21°C	Circling NA east of Rwy 1-19. Inop table does not apply. If local altimeter setting not received, procedure NA.	MALS A₂ =	MISSED APPROACH: Climb to 14000 via JAC R-192 to KICNE INT/JAC 26.6 DME, and right turn via IDA R-096 to IDA VOR/DME and hold.
--	---	--------------------------------	--

ATIS* 120.625	SALT LAKE CENTER 133.25 285.6	JACKSON TOWER* 118.075 (CTAF) Ⓛ	GND CON 124.55	UNICOM 122.95
-------------------------	---	--	--------------------------	-------------------------



CATEGORY	A	B	C	D
S-19	7840-1¼ 1389 (1400-1¼)	7840-1½ 1389 (1400-1½)	7840-3	1389 (1400-3)
CIRCLING	7840-1¼ 1389 (1400-1¼)	7840-1½ 1389 (1400-1½)	7840-3	1389 (1400-3)

NW-1, 25 FEB 2021 to 25 MAR 2021

NW-1, 25 FEB 2021 to 25 MAR 2021