

VORTAC RZS 114.9 Chan 96	APP CRS 097°	Rwy Idg TDZE Apt Elev	N/A N/A 674
--	------------------------	-----------------------------	--

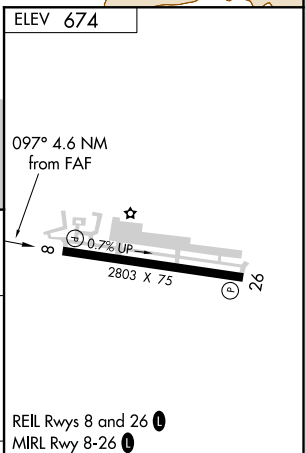
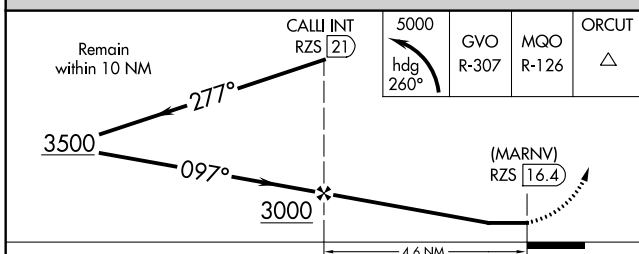
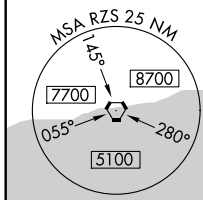
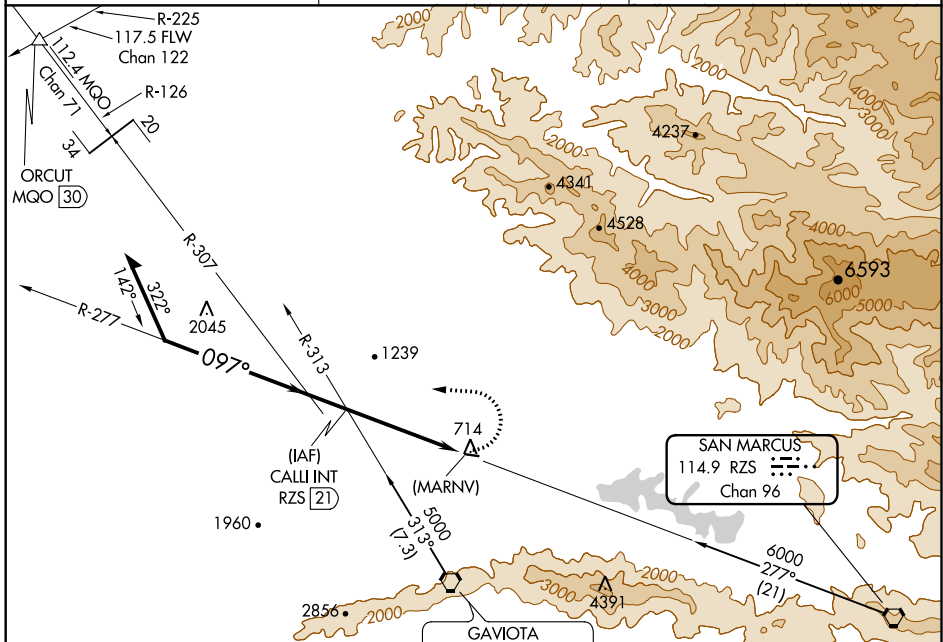
VOR or GPS-B

SANTA YNEZ (IZA)

⚠ Obtain local altimeter setting on CTAF, when not received, except for operators with approved weather reporting service, use Lompoc altimeter setting and increase all MDA's 540 feet.

⚠ MISSED APPROACH: Climbing left turn to 5000 via heading 260° and GVO R-307 and MQO R-126 to ORCUT INT.

AWOS-3 118.075	SANTA BARBARA APP CON* 124.15 327.8	UNICOM 122.8 (CTAF) 📻
--------------------------	---	--



CATEGORY	A	B	C	D	FAF to MAP 4.6 NM						
CIRCLING	1880-1¼ 1206 (1300-1¼)	1880-1½ 1206 (1300-1½)	NA			Knots	60	90	120	150	180
						Min:Sec	4:36	3:04	2:18	1:50	1:32

SW-3, 25 FEB 2021 to 25 MAR 2021

SW-3, 25 FEB 2021 to 25 MAR 2021