

APP CRS	Rwy Idg	2804
084°	TDZE	674
	Apt Elev	674

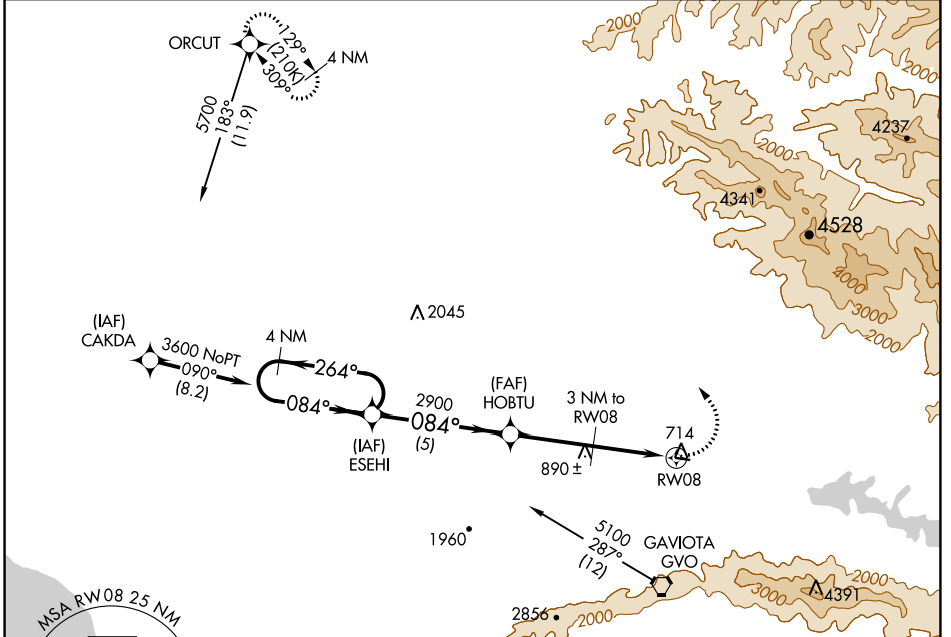
GPS RWY 8

SANTA YNEZ (IZA)

NA When local altimeter setting not received, use Lompoc altimeter setting.
 Rwy 8 helicopter visibility reduction below 3/4 SM NA.

MISSED APPROACH: Climbing left turn to 5000 direct ORCUT WP and hold.

AWOS-3 118.075	SANTA BARBARA APP CON* 124.15 327.8	UNICOM 122.8 (CTAF)
---------------------------------	--	--------------------------------------



4 NM Holding Pattern	VGSI and descent angles not coincident (VGSI Angle 3.00/TCH 31).	5000	ORCUT
4000 ← 264°	HOBTU	3 NM to RW08	084° to RW08
3600 ← 084°	2900	3.54° TCH 40	2803 X 75
	1820		20
	5 NM	3 NM	3 NM

ELEV 674	TDZE 674
----------	----------

CATEGORY	A	B	C	D
S-8	1060-1	386 (400-1)		NA
LOMPOC ALTIMETER SETTING MINIMUMS				
S-8	1600-1¼	926 (1000-1¼)		NA

REIL Rwy 8 and 26
 MRL Rwy 8-26

SW-3, 25 FEB 2021 to 25 MAR 2021

SW-3, 25 FEB 2021 to 25 MAR 2021