

(IYK2.LHS) 19227

AL-5417 (FAA)

INYOKERN (IYK)
INYOKERN, CALIFORNIA

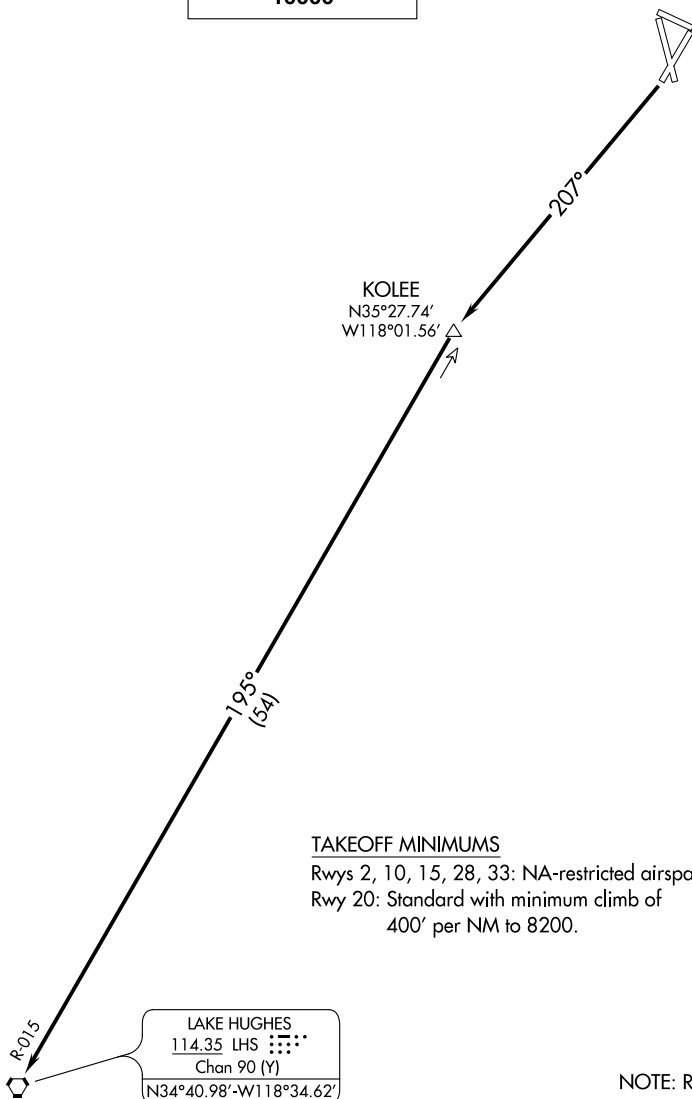
INYOKERN TWO DEPARTURE

JOSHUA DEP CON
133.65 348.7

**TOP ALTITUDE:
10000**

SW-3, 25 FEB 2021 to 25 MAR 2021

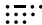
SW-3, 25 FEB 2021 to 25 MAR 2021



TAKEOFF MINIMUMS

Rwys 2, 10, 15, 28, 33: NA-restricted airspace/terrain.

Rwy 20: Standard with minimum climb of 400' per NM to 8200.

LAKE HUGHES
114.35 LHS 
Chan 90 (Y)
N34°40.98'-W118°34.62'
L-3-4-7

NOTE: RADAR required.

NOTE: Chart not to scale.



DEPARTURE ROUTE DESCRIPTION

TAKEOFF RWY 20: Climb to 10000 on heading 207° and LHS VORTAC R-015 to LHS VORTAC, then proceed on course.

INYOKERN TWO DEPARTURE

(IYK2.LHS) 15SEP16

INYOKERN, CALIFORNIA
INYOKERN (IYK)