

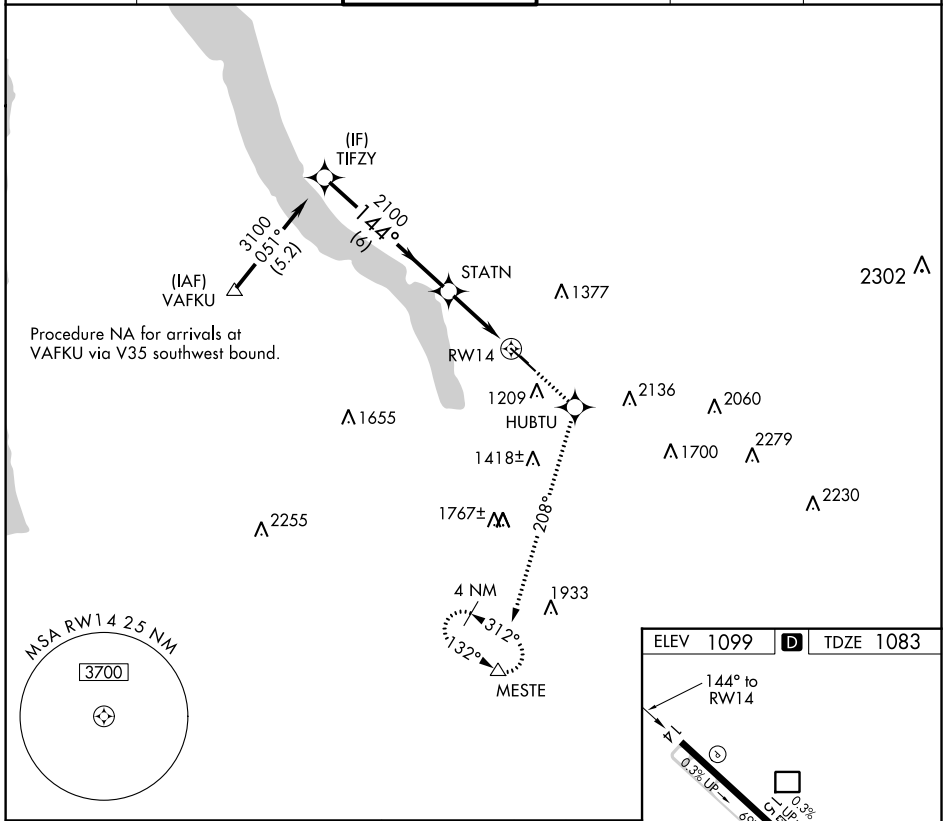
WAAS CH <b>50415</b> <b>W14A</b>	APP CRS <b>144°</b>	Rwy Idg TDZE Apt Elev	<b>6602</b> <b>1083</b> <b>1099</b>
--	------------------------	-----------------------------	---

# RNAV (GPS) Z RWY 14

ITHACA TOMPKINS INTL (ITH)

<p><b>▽</b> DME/DME RNP-0.3 NA. Visibility reduction by helicopters NA. When local altimeter setting not received, use Elmira altimeter setting and increase DA 84 feet and LPV all Cats visibility ¼ mile.</p> <p><b>⚠</b> MISSED APPROACH: Climb to 3800 direct HUBTU and via track 208° to MESTE and hold.</p>
---

ATIS <b>125.175</b>	ELMIRA APP CON ★ <b>124.3 257.8</b>	ITHACA TOWER ★ <b>119.6 (CTAF) 0</b>	GND CON <b>121.8</b>	CLNC DEL <b>121.8</b>	UNICOM <b>122.95</b>
------------------------	--	---	-------------------------	--------------------------	-------------------------



NE-2, 25 FEB 2021 to 25 MAR 2021

NE-2, 25 FEB 2021 to 25 MAR 2021

