

WAAS CH <b>62815</b> <b>W32A</b>	APP CRS <b>325°</b>	Rwy Idg <b>6602</b> TDZE <b>1099</b> Aprt Elev <b>1099</b>
--	------------------------	--

# RNAV (GPS) RWY 32

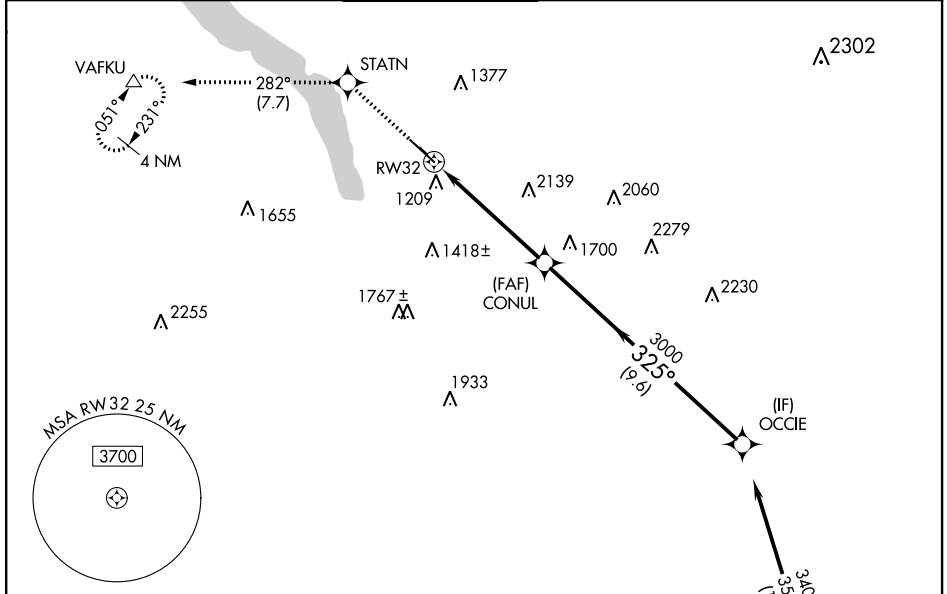
ITHACA TOMPKINS INTL (ITH)

RNP APCH

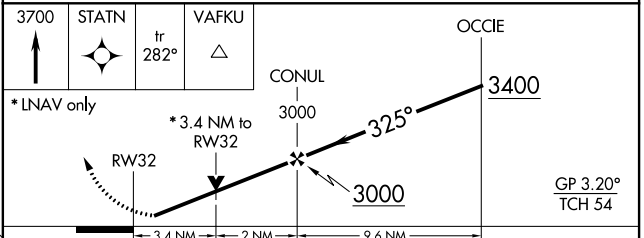
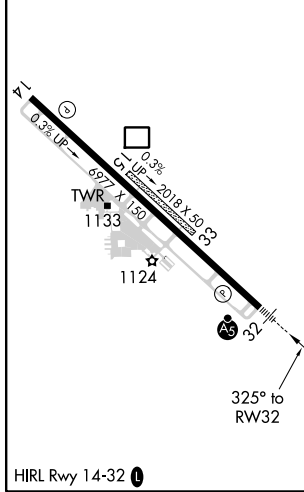
**▼** Circling NA to Rwy 15 and 33. Inop table does not apply to LNAV Cat A. Rwy 32 helicopter visibility reduction below 3/4 SM NA. When local altimeter setting not received, use **25** -19°C Elmira altimeter setting and increase all DA 84 feet and all MDA 100 feet. For inop MALSR, increase LNAV Cat B visibility 1/4 mile. For inop MALSR, when using Elmira altimeter setting, increase LPV all Cats visibility to RVR 6000, and increase LNAV Cat B visibility to 1/2.

**MALSR**  
**AS**  
**MISSED APPROACH:**  
Climb to 3700 direct STATN and on track 282° to VAFKU and hold.

ATIS <b>125.175</b>	ELMIRA APP CON ★ <b>124.3 257.8</b>	ITHACA TOWER ★ <b>119.6</b> (CTAF) <b>0</b>	GND CON <b>121.8</b>	CNLC DEL <b>121.8</b>	UNICOM <b>122.95</b>
------------------------	--	--	-------------------------	--------------------------	-------------------------



ELEV 1099	<b>D</b>	TDZE 1099
-----------	----------	-----------



CATEGORY	A	B	C	D
LPV DA	1385/40		286 (300-3/4)	
LNAV MDA	2300/60 1201 (1300-1 1/4)		2300-2 1/2 1201 (1300-2 1/2)	
<b>C</b> CIRCLING	2300-1 1/4 1201 (1300-1 1/4)		2300-3 1201 (1300-3) 2440-3 1341 (1400-3)	

NE-2, 25 FEB 2021 to 25 MAR 2021

NE-2, 25 FEB 2021 to 25 MAR 2021