

WAAS CH 53527 W28A	APP CRS 275°	Rwy Idg TDZE 682 Apt Elev 684	5001
--	------------------------	---	-------------

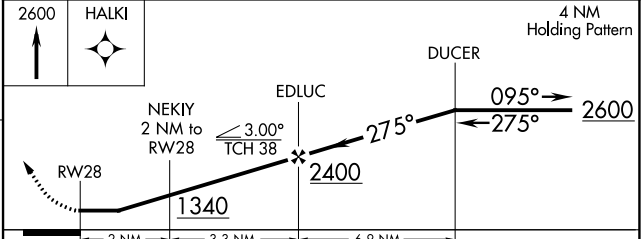
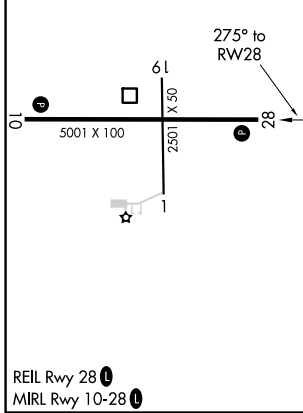
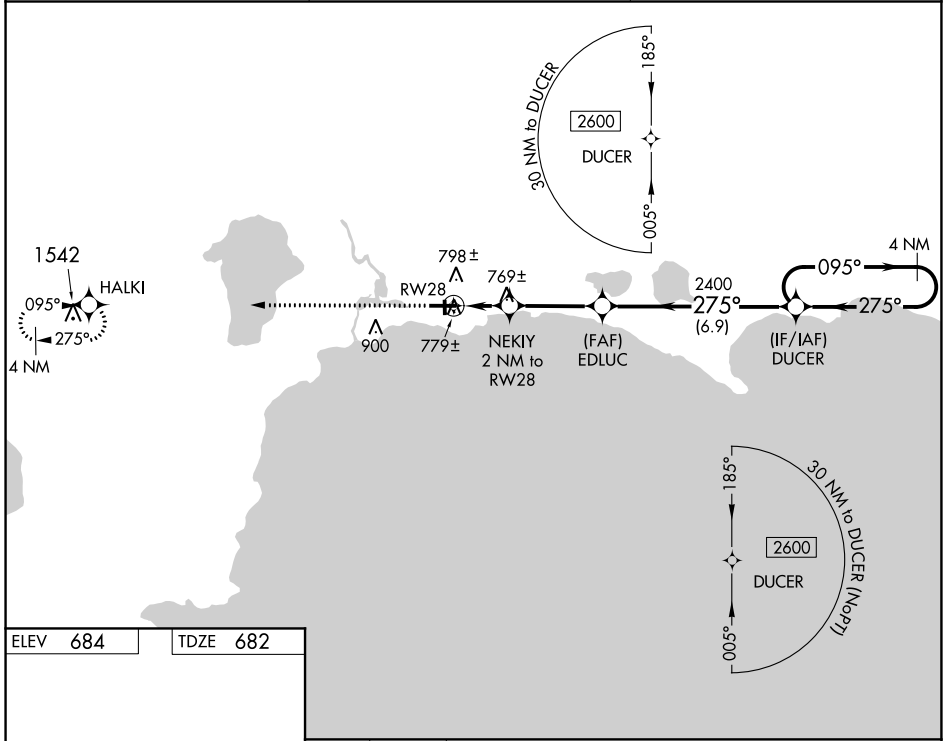
RNAV (GPS) RWY 28

SCHOOLCRAFT COUNTY (ISQ)

⚠ When local altimeter setting not received, use Beaver Island altimeter setting and increase all MDA 80 feet, increase LP Cat C and D visibility ¼ mile and LNAV Cat C and D visibility ⅜ mile. When VGS1 inop, Straight-In/Circling Rwy 28 procedure NA at night. DME/DME RNP-0.3 NA. Visibility reduction by helicopters NA. Circling to Rwy 1/19 NA at night.

MISSED APPROACH: Climb to 2600 direct HALKI and hold.

AWOS-3 118.775	MINNEAPOLIS APP CON 134.6 354.05	UNICOM 122.8 (CTAF) 0
--------------------------	--	---------------------------------



CATEGORY	A	B	C	D
LP MDA		1020-1	338 (400-1)	
LNAV MDA		1040-1	358 (400-1)	
CIRCLING	1120-1 436 (500-1)	1140-1 456 (500-1)	1140-1½ 456 (500-1½)	1260-2 576 (600-2)

EC-1, 25 FEB 2021 to 25 MAR 2021

EC-1, 25 FEB 2021 to 25 MAR 2021