

APP CRS	Rwy Idg	<b>5001</b>
<b>095°</b>	TDZE	<b>684</b>
	Apt Elev	<b>684</b>

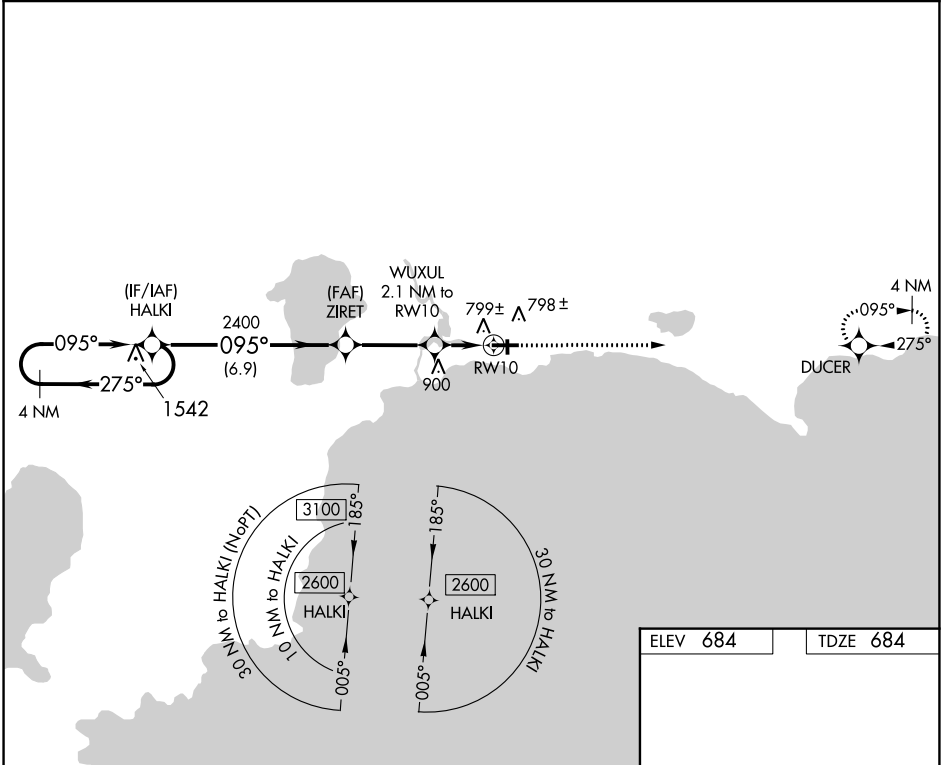
# RNAV (GPS) RWY 10

SCHOOLCRAFT COUNTY (ISQ)

**⚠** DME/DME RNP-0.3 NA. Helicopter visibility reduction below 1 SM NA. When local altimeter setting not received, use Beaver Island altimeter setting and increase all MDA 80 feet, increase LNAV Cat C and D visibility 3/8 mile. When VGSI inop, Straight-In/Circling Rwy 10 procedure NA at night. When VGSI inop, Circling Rwy 28 NA at night. Night landing: Rwy 1, 19 NA.

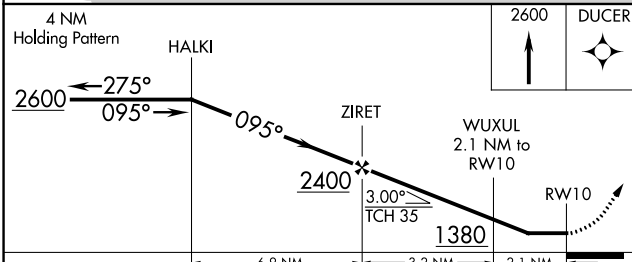
**MISSED APPROACH:**  
Climb to 2600 direct DUCER and hold.

<b>AWOS-3</b> <b>118.775</b>	<b>MINNEAPOLIS APP CON</b> <b>134.6 354.05</b>	<b>UNICOM</b> <b>122.8 (CTAF) <b>L</b></b>
---------------------------------	---	---

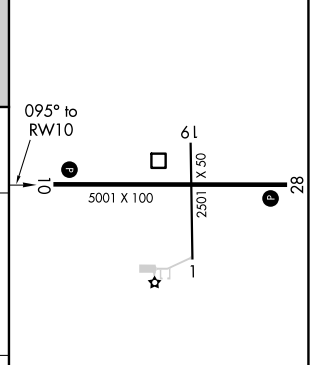


EC-1, 25 FEB 2021 to 25 MAR 2021

EC-1, 25 FEB 2021 to 25 MAR 2021



ELEV 684	TDZE 684
----------	----------



CATEGORY	A	B	C	D
LNAV MDA	1060-1 376 (400-1)			
CIRCLING	1120-1 436 (500-1)	1140-1 456 (500-1)	1140-1½ 456 (500-1½)	1260-2 576 (600-2)

REIL Rwy 28 **L**  
MIRL Rwy 10-28 **L**