

WAAS CH 90230 W18A	APP CRS 184°	Rwy Idg TDZE Apt Elev	5201 915 924
--	------------------------	-----------------------------	---

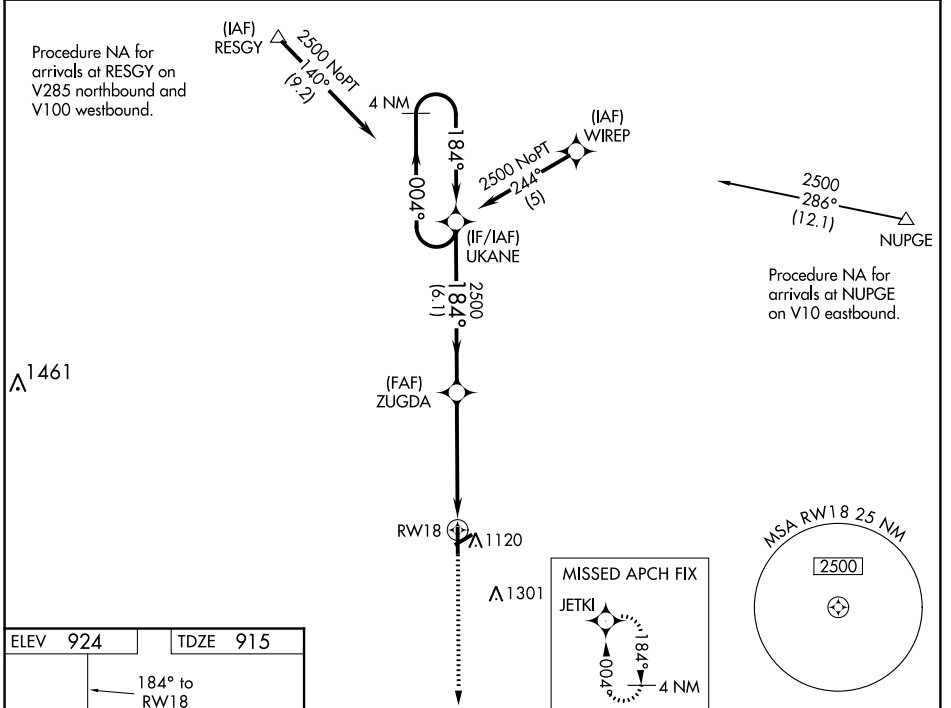
RNAV (GPS) RWY 18

KIRSCH MUNI (IRS)

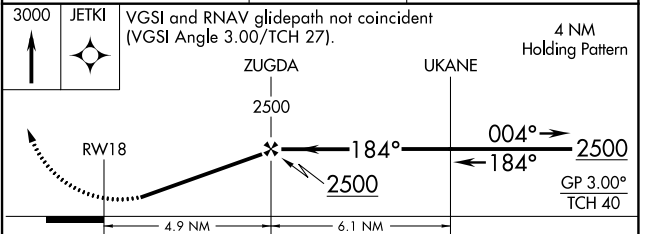
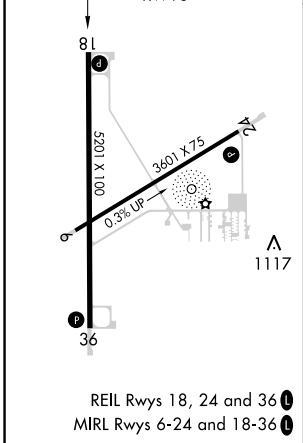
⚠ Circling to Rwy 6, 24 NA at night. Baro-VNAV NA. When VGSi inop, Straight-In/Circling Rwy 18 procedure NA at night. DME/DME RNP-0.3 NA. Visibility reduction by helicopters NA. When local altimeter setting not received, use Three Rivers altimeter setting and increase all DA/MDA 40 feet; increase LPV visibility all Cats and LNAV Cat C and D ½ mile, increase LNAV/VNAV vis all Cats ¼ mile.

⚠ MISSED APPROACH: Climb to 3000 direct JETKI and hold.

AWOS-3 121.325	GREAT LAKES APP CON * 121.2 239.25	CLNC DEL 118.325	UNICOM 123.05 (CTAF) ⓪
--------------------------	--	----------------------------	---



ELEV 924	TDZE 915
-----------------	-----------------



CATEGORY	A	B	C	D
LPV DA	1235-1 1/8		320 (400-1 1/8)	
LNAV/VNAV DA	1229-1		314 (300-1)	
LNAV MDA	1400-1	485 (500-1)	1400-1 3/8	485 (500-1 3/8)
CIRCLING	1440-1	516 (600-1)	1440-1 1/2 516 (600-1 1/2)	1620-2 1/4 696 (700-2 1/4)

EC-1, 25 FEB 2021 to 25 MAR 2021

EC-1, 25 FEB 2021 to 25 MAR 2021