

NDB IRS 382	APP CRS 170°	Rwy Idg 5201
		TDZE 915
		Apt Elev 924

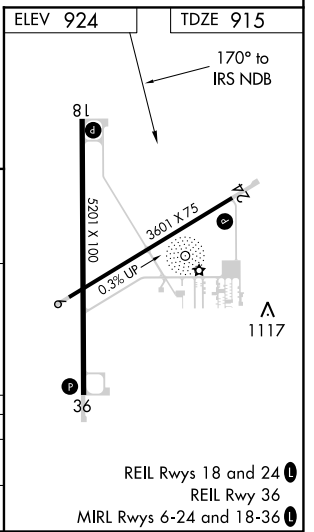
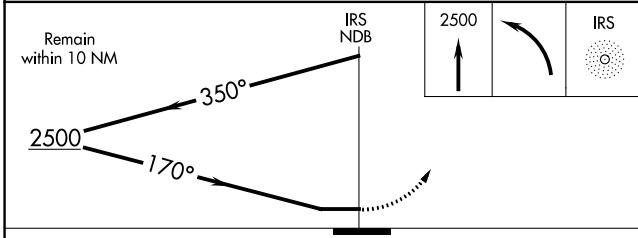
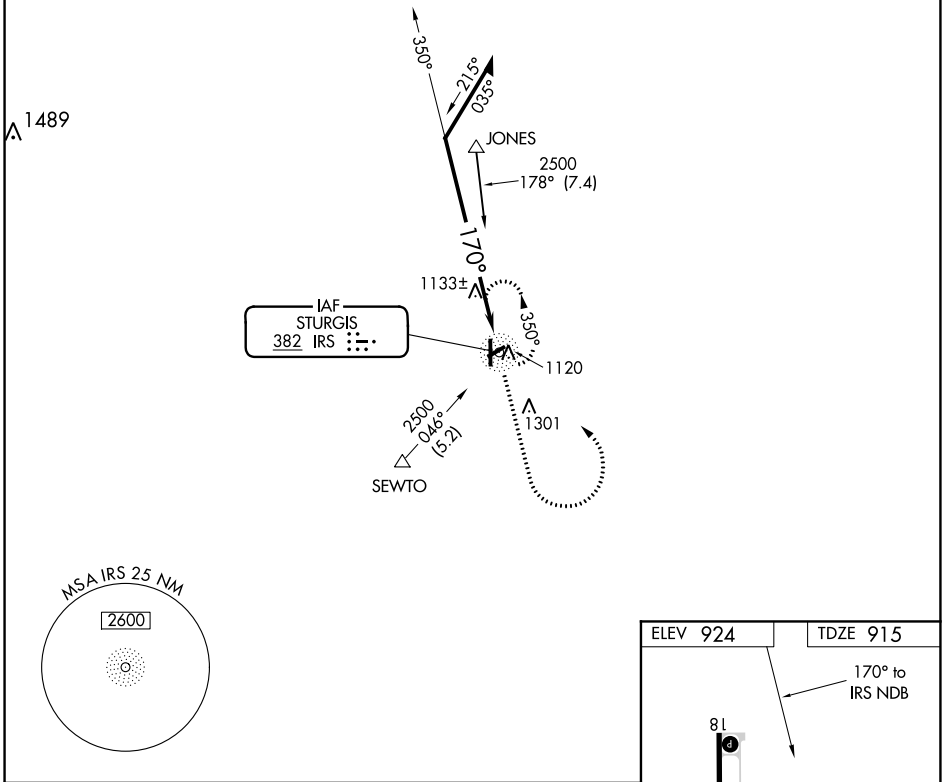
NDB RWY 18

KIRSCH MUNI (IRS)

⚠ When local altimeter setting not received, use Three Rivers altimeter setting and increase all MDA 40 feet, increase S-18 Cat C and D visibility and Circling Cat C ¼ mile. Rwy 18 helicopter visibility reduction below 1 SM NA. Procedure NA at night.

⚠ NA MISSED APPROACH: Climb to 2500 then left turn direct IRS NDB and hold.

AWOS-3 121.325	GREAT LAKES APP CON * 121.2 239.25	CLNC DEL 118.325	UNICOM 123.05 (CTAF) 0
--------------------------	--	----------------------------	----------------------------------



CATEGORY	A	B	C	D
S-18	1500-1	585 (600-1)	1500-1½ 585 (600-1½)	1500-1¾ 585 (600-1¾)
CIRCLING	1500-1	576 (600-1)	1500-1½ 576 (600-1½)	1620-2¼ 696 (700-2¼)

REIL Rwy 18 and 24 0
REIL Rwy 36
MIRL Rwy 6-24 and 18-36 0

EC-1, 25 FEB 2021 to 25 MAR 2021

EC-1, 25 FEB 2021 to 25 MAR 2021