

LOC/DME I-IPJ 111.15 Chan 48 (Y)	APP CRS 233°	Rwy Idg TDZE Apt Elev	5501 872 878
---	------------------------	-----------------------------	---

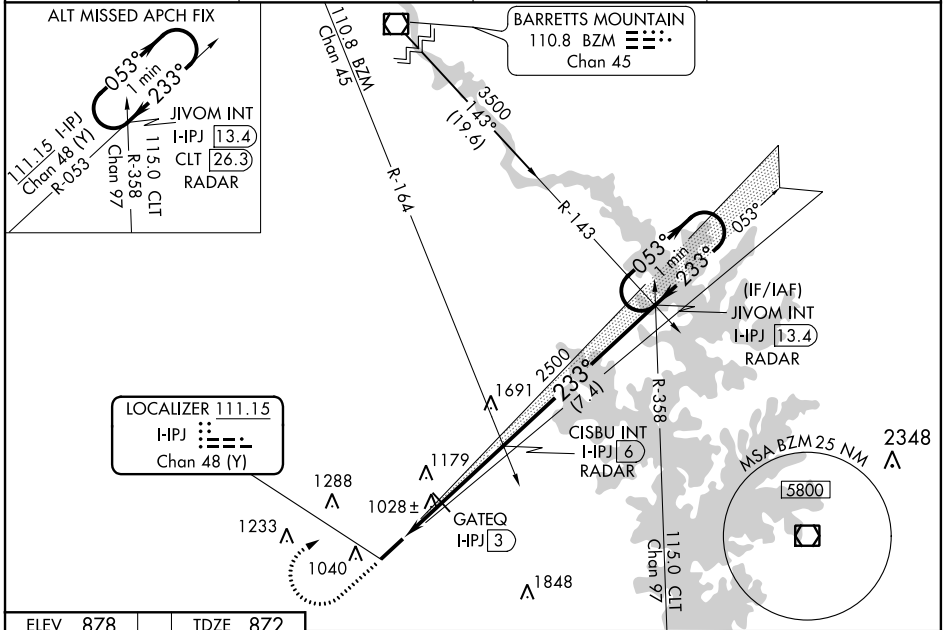
ILS Z or LOC Z RWY 23

LINCOLNTON-LINCOLN COUNTY RGNL (IPJ)

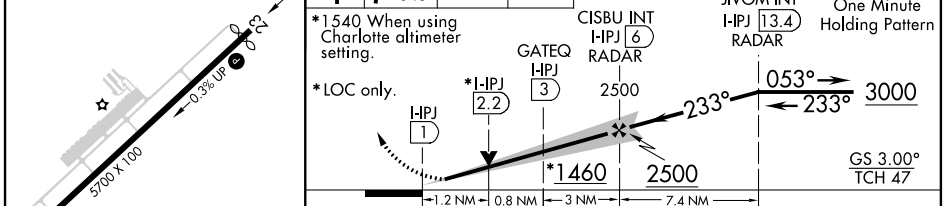
⚠ When local altimeter setting not received, use Charlotte altimeter setting: increase DA to 1212 feet and visibility $\frac{1}{8}$ SM; increase all MDAs 80 feet and visibility S-LOC 23 Cats C/D $\frac{1}{8}$ SM and Circling Cats C/D $\frac{1}{4}$ SM and GATEQ Fix Minimums Cats C/D $\frac{1}{4}$ SM. VDP NA when using Charlotte altimeter setting. Rwy 23 helicopter visibility reduction below $\frac{3}{4}$ SM NA.

MISSED APPROACH: Climb to 1600 then climbing right turn to 3100 on heading 043° and BZM VOR/DME R-143 to JIVOM INT/I-PJ 13.4 DME/RADAR and hold.

AWOS-3 119.675	CHARLOTTE APP CON 134.75 257.2	CLNC DEL (GCO) 124.9	UNICOM 123.05 (CTAF) 0
--------------------------	--	--------------------------------	----------------------------------



ELEV 878	TDZE 872	1600	3100	BZM R-143	JIVOM INT
----------	----------	------	------	-----------	-----------



CATEGORY	A	B	C	D
S-ILS 23	1149- $\frac{7}{8}$ 277 (300-%)			
S-LOC 23	1460-1	588 (600-1)	1460-1 $\frac{3}{4}$	588 (600-1 $\frac{1}{4}$)
C CIRCLING	1460-1	582 (600-1)	1640-2 $\frac{1}{4}$ 762 (600-2 $\frac{1}{4}$)	1640-2 $\frac{1}{2}$ 762 (800-2 $\frac{1}{2}$)
GATEQ FIX MINIMUMS				
S-LOC 23	1280-1	408 (500-1)	1280-1 $\frac{1}{8}$	408 (500-1 $\frac{1}{8}$)
C CIRCLING	1400-1 522 (600-1)	1440-1 562 (600-1)	1640-2 $\frac{1}{4}$ 762 (800-2 $\frac{1}{4}$)	1640-2 $\frac{1}{2}$ 762 (800-2 $\frac{1}{2}$)

SE-2, 25 FEB 2021 to 25 MAR 2021

SE-2, 25 FEB 2021 to 25 MAR 2021