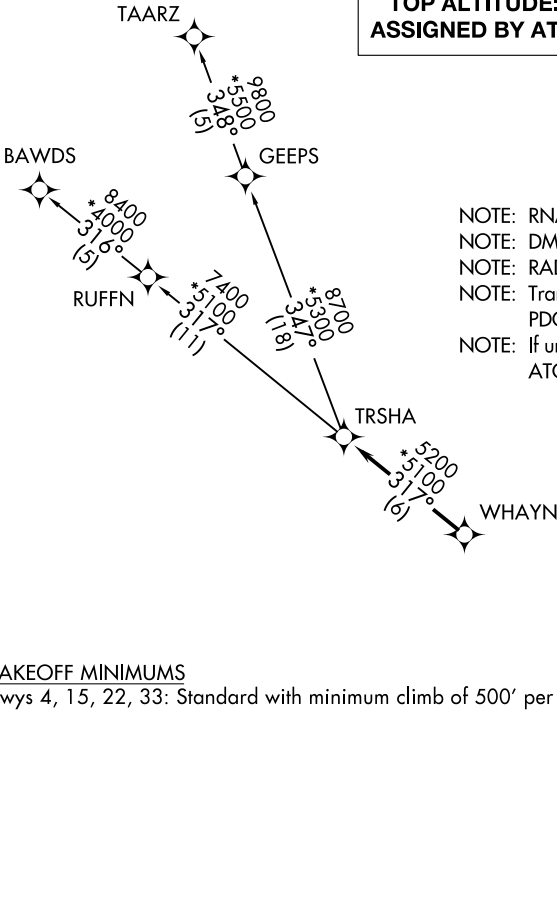


TRSHA ONE DEPARTURE (RNAV)

WINSTON-SALEM, NORTH CAROLINA

**TOP ALTITUDE:
ASSIGNED BY ATC**

ATIS 121.3
GND CON 128.25
WINSTON-SALEM TOWER * 123.75 257.8
GREENSBORO DEP CON 124.35 269.225



NOTE: RNAV 1.
 NOTE: DME/DME/IRU or GPS required.
 NOTE: RADAR required.
 NOTE: Transponder code will be issued via PDC or Greensboro CLNC DEL.
 NOTE: If unable to accept climb rates, advise ATC on initial contact.

TAKEOFF MINIMUMS

Rwys 4, 15, 22, 33: Standard with minimum climb of 500' per NM to 1480.

NOTE: Chart not to scale.

DEPARTURE ROUTE DESCRIPTION

- TAKEOFF RWY 4:** Climb heading 039° to 1480, then on heading 039°. Thence. . . .
- TAKEOFF RWY 15:** Climb heading 153° to 1480, then on heading 153°. Thence. . . .
- TAKEOFF RWY 22:** Climb heading 219° to 1480, then on heading 219°. Thence. . . .
- TAKEOFF RWY 33:** Climb heading 333° to 1480, then on heading 333°. Thence. . . .

. . . . expect RADAR vectors to WHAYN, then on track 317° to TRSHA, then on assigned transition. Maintain altitude assigned by ATC. Expect clearance to filed altitude within ten (10) minutes after departure.

- BAWDS TRANSITION (TRSHA1.BAWDS)
- TAARZ TRANSITION (TRSHA1.TAARZ)

TRSHA ONE DEPARTURE (RNAV)

(TRSHA1.TRSHA) 05JAN17

WINSTON-SALEM, NORTH CAROLINA
SMITH REYNOLDS (INT)

SE-2, 25 FEB 2021 to 25 MAR 2021

SE-2, 25 FEB 2021 to 25 MAR 2021