


| | | |
|--|------------------------|---|
| WAAS CH 82011 W33A | APP CRS 332° | Rwy Idg TDZE 941 Apt Elev 969 |
|--|------------------------|---|

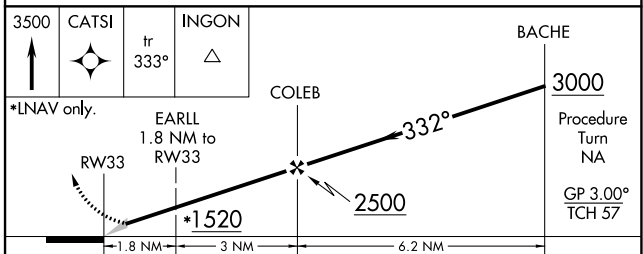
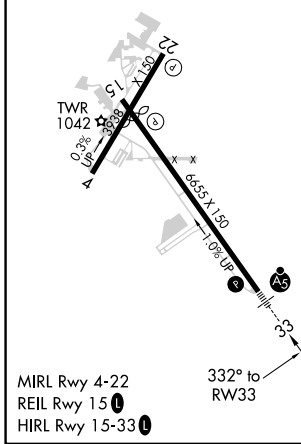
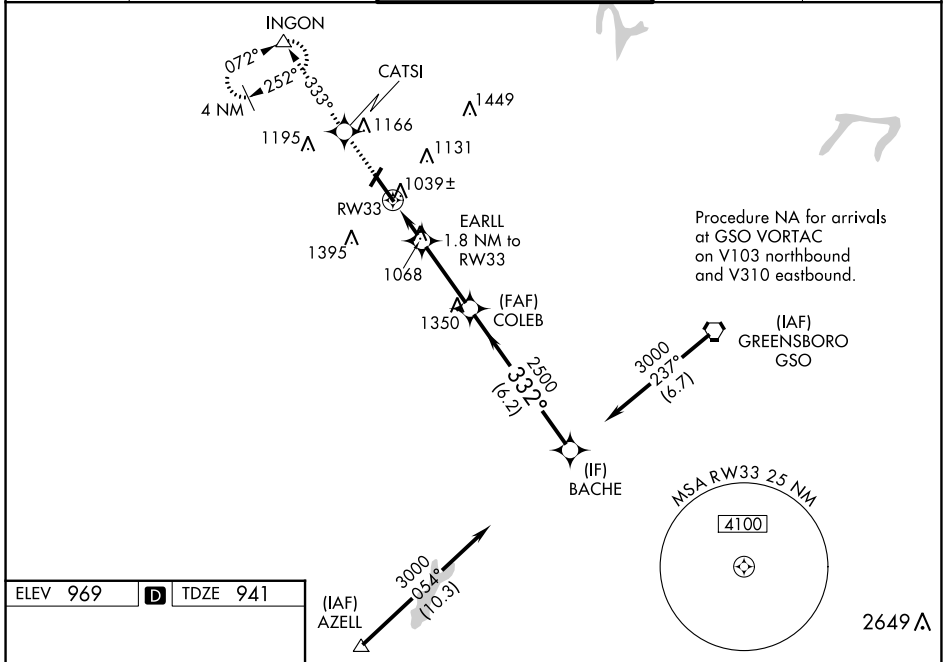
RNAV (GPS) RWY 33

SMITH REYNOLDS (INT)

⚠ For inoperative MALSR, when using Piedmont Triad Intl altimeter setting, increase LPV all Cats visibility to 1 mile. Baro-VNAV NA when using Piedmont Triad Intl altimeter setting. For uncompensated Baro-VNAV systems, LNAV/VNAV NA below -1.6°C (4°F) or above 47°C (116°F). DME/DME RNP-0.3 NA. When local altimeter setting not received, use Piedmont Triad Intl altimeter setting and increase all DA 39 feet, and all MDA 40 feet, increase LNAV/VNAV all Cats and Circling Cat D visibility ¼ mile. Circling Rwy 4, 22 NA at night. **RVR 1800 authorized with use of FD or AP or HUD to DA, NA when using Piedmont Triad Intl altimeter setting.

MALSR

MISSED APPROACH:
 Climb to 3500 direct CATSI and on 333° track to INGON and hold, continue climb-in-hold to 3500.

| | | | | |
|----------------------|---|---|--------------------------|-------------------------|
| ATIS 121.3 | GREENSBORO APP CON 124.35 269.225 | WINSTON-SALEM TOWER * 123.75 (CTAF) 0 257.8 | GND CON 128.25 | UNICOM 122.95 |
|----------------------|---|---|--------------------------|-------------------------|



| CATEGORY | A | B | C | D |
|--------------|-----------------------|-----------------------|-------------------------|-------------------------|
| LPV DA** | | 1141/24 | 200 (200-1/2) | |
| LNAV/VNAV DA | | 1407/60 | 466 (500-1¼) | |
| LNAV MDA | 1380/24 | 439 (500-½) | 1380/40 439 (500-¾) | 1380/50 439 (500-1) |
| CIRCLING | 1480-1 511 (600-1) | 1580-1 611 (700-1) | 1580-1¼ 611 (700-1¼) | 1740-2½ 771 (800-2½) |

SE-2, 25 FEB 2021 to 25 MAR 2021

SE-2, 25 FEB 2021 to 25 MAR 2021