

APP CRS	Rwy Idg	6069
152°	TDZE	968
	Apt Elev	969

RNAV (GPS) RWY 15

SMITH REYNOLDS (INT)

RNP APCH.

⚠ When local altimeter setting not received, use Piedmont Triad Intl altimeter setting and increase all MDA 40 feet and Circling Cat D visibility ¼ mile. Circling Rwy 4, 22 NA at night. Rwy 15 helicopter visibility reduction below ¾ SM NA.

MISSED APPROACH:
 Climb to 3000 direct COLEB and on track 102° to GSO VORTAC and hold.

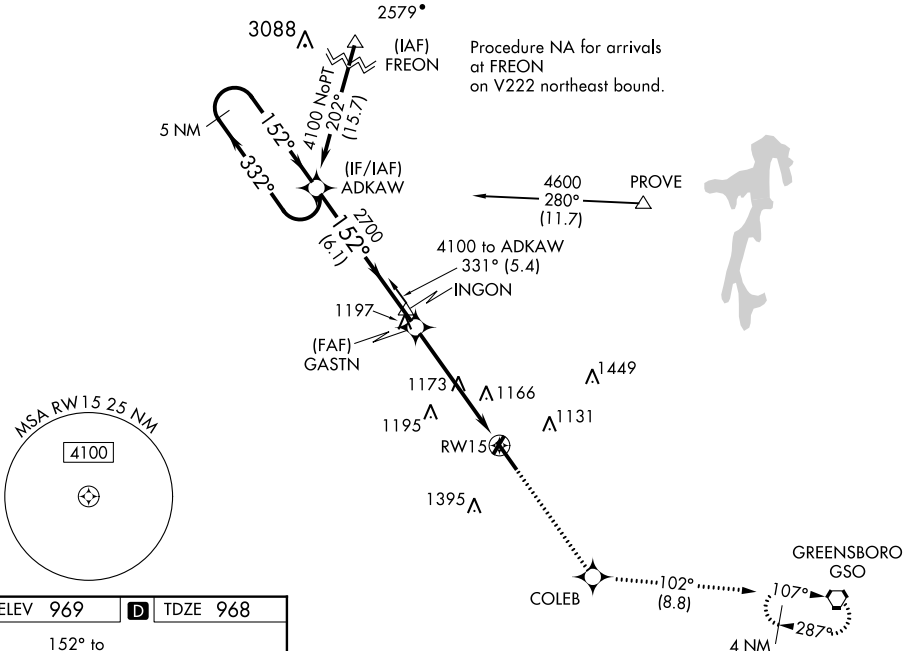
ATIS
121.3

GREENSBORO APP CON
124.35 269.225

WINSTON-SALEM TOWER ★
123.75 (CTAF) 0 257.8

GND CON
128.25

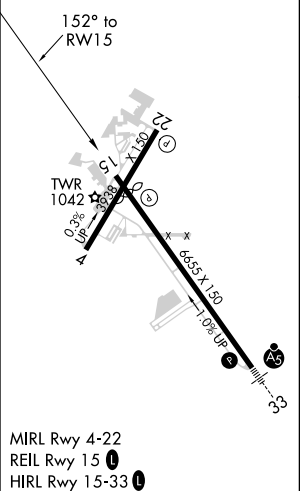
UNICOM
122.95



SE-2, 25 FEB 2021 to 25 MAR 2021

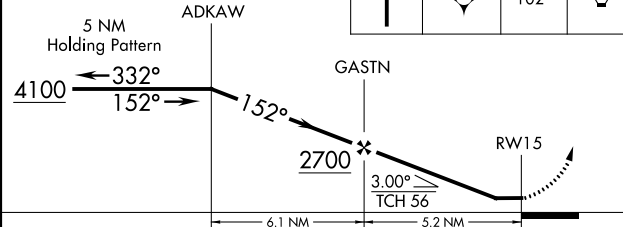
SE-2, 25 FEB 2021 to 25 MAR 2021

ELEV 969 **D** TDZE 968



VGSI and descent angles not coincident (VGSI Angle 3.00/TCH 38).

3000	COLEB	tr 102°	GSO
↑	⚠	⓪	⓪



CATEGORY	A	B	C	D
LNAV MDA	1440-1	472 (500-1)	1440-1⅓	472 (500-1⅓)
CIRCLING	1480-1 511 (600-1)	1580-1 611 (700-1)	1580-1¾ 611 (700-1¾)	1740-2½ 771 (800-2½)