

VORTAC INK <b>112.1</b> Chan <b>58</b>	APP CRS <b>150°</b>	Rwy Idg TDZE Apt Elev	<b>5003</b> <b>2822</b> <b>2822</b>
--	------------------------	-----------------------------	---

# VOR RWY 13

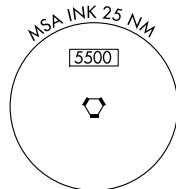
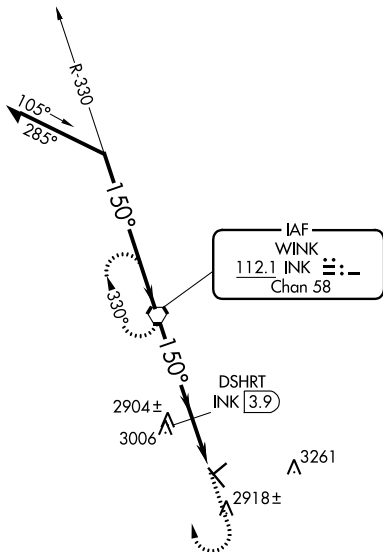
WINKLER COUNTY (INK)

**⚠** When local altimeter setting not received, use Pecos altimeter setting and increase all MDAs 100 feet and Cat C visibility ¼ mile and increase DSHRT Fix: all MDA 100 feet and S-13 Cat C visibility ¼ mile. VDP NA when using Pecos altimeter setting.

**MISSED APPROACH:** Climb to 3500 then climbing right turn to 5000 direct INK VORTAC and hold.

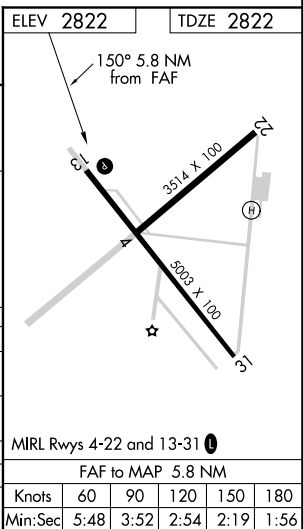
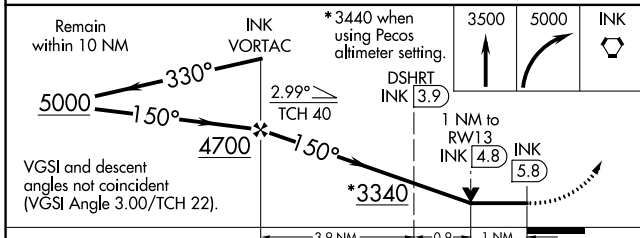
ASOS <b>118.325</b>	FORT WORTH CENTER <b>133.1 298.95</b>	UNICOM <b>123.0 (CTAF) 0</b>
------------------------	--	---------------------------------

3626 **△**



SC-3, 25 FEB 2021 to 25 MAR 2021

SC-3, 25 FEB 2021 to 25 MAR 2021



CATEGORY	A	B	C	D
S-13	3340-1	518 (600-1)	3340-1½ 518 (600-1½)	NA
CIRCLING	3340-1	518 (600-1)	3340-1½ 518 (600-1½)	NA
DSHRT FIX MINIMUMS				
S-13	3160-1 338 (400-1)			NA
CIRCLING	3280-1 458 (500-1)	3300-1 478 (500-1)	3300-1½ 478 (500-1½)	NA