

WAAS CH 93831 W13A	APP CRS 132°	Rwy Idg TDZE Apt Elev	5003 2822 2822
--	------------------------	-----------------------------	---

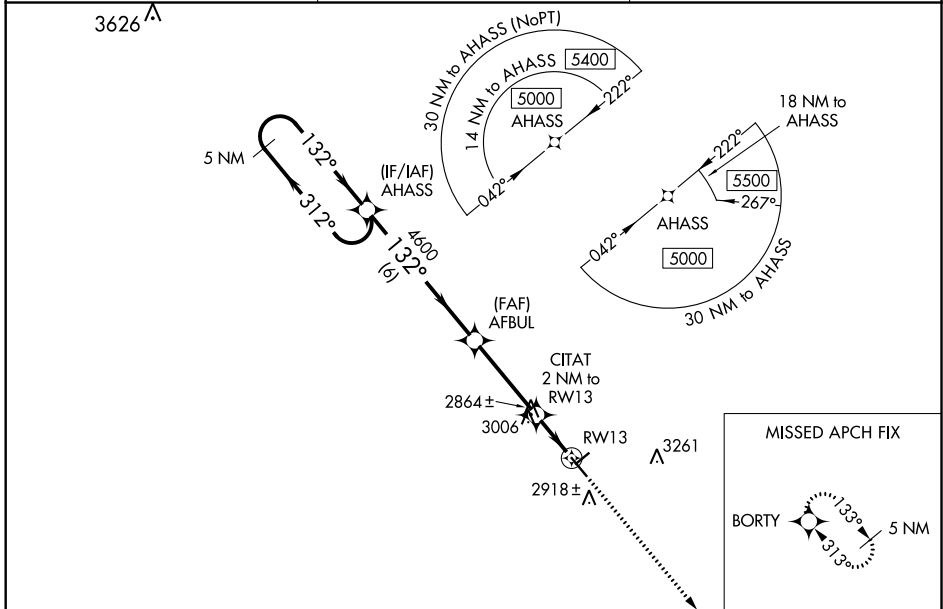
RNAV (GPS) RWY 13

WINKLER COUNTY (INK)

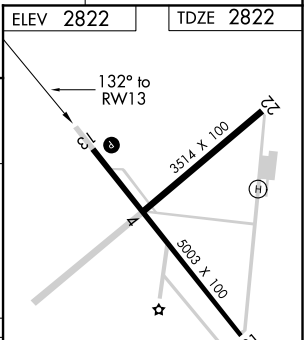
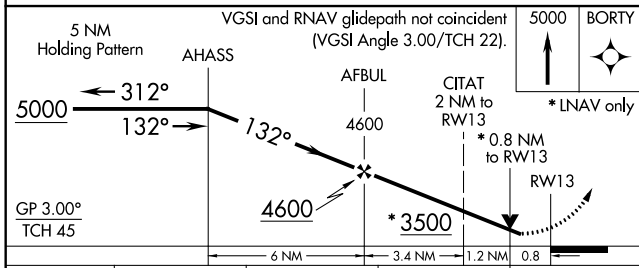
⚠ Baro-VNAV NA when using Pecos altimeter setting. For uncompensated Baro-VNAV systems, LNAV/VNAV NA below -20°C (-4°F) or above 54°C (130°F). DME/DME RNP-0.3 NA. VDP NA with Pecos altimeter setting. Helicopter visibility reduction below 3/4 SM NA. When local altimeter setting not received, use Pecos altimeter setting and increase all DA 95 feet and all MDA 100 feet. Increase LPV and LNAV/VNAV all Cats visibility 3/8 mile, LNAV and Circling Cat C visibility 1/4 mile.

MISSED APPROACH:
Climb to 5000 direct BORTY and hold.

ASOS 118.325	FORT WORTH CENTER 133.1 298.95	UNICOM 123.0 (CTAF) 0
------------------------	--	---------------------------------



ELEV 2822	TDZE 2822
-----------	-----------



CATEGORY	A	B	C	D
LPV DA	3072-3/4	250 (300-3/4)		NA
LNAV/VNAV DA	3072-3/4	250 (300-3/4)		NA
LNAV MDA	3120-1	298 (300-1)	3120-7/8 298 (300-7/8)	NA
CIRCLING	3280-1	458 (500-1)	3580-2 1/4 758 (800-2 1/4)	NA

MIRL Rwy 4-22 and 13-31 0

SC-3, 25 FEB 2021 to 25 MAR 2021

SC-3, 25 FEB 2021 to 25 MAR 2021