


WAAS CH <b>45708</b> <b>W03A</b>	APP CRS <b>035°</b>	Rwy Idg <b>5000</b> TDZE <b>812</b> Apt Elev <b>819</b>
--	------------------------	---

# RNAV (GPS) Z RWY 3

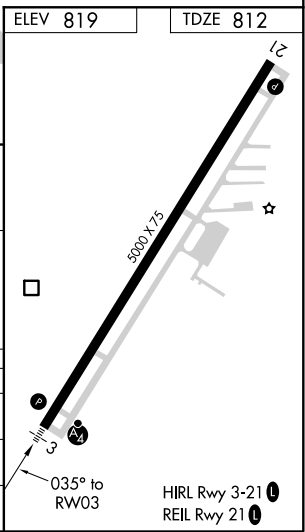
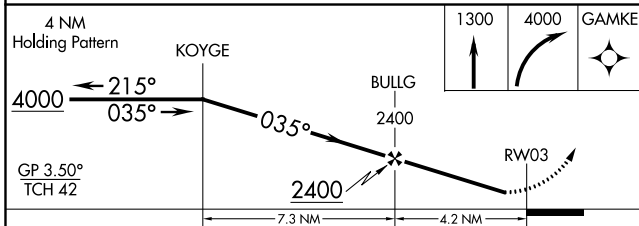
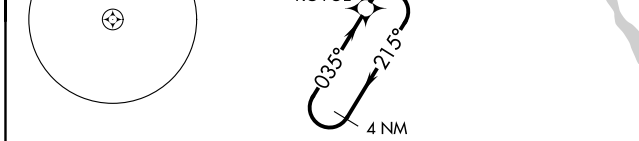
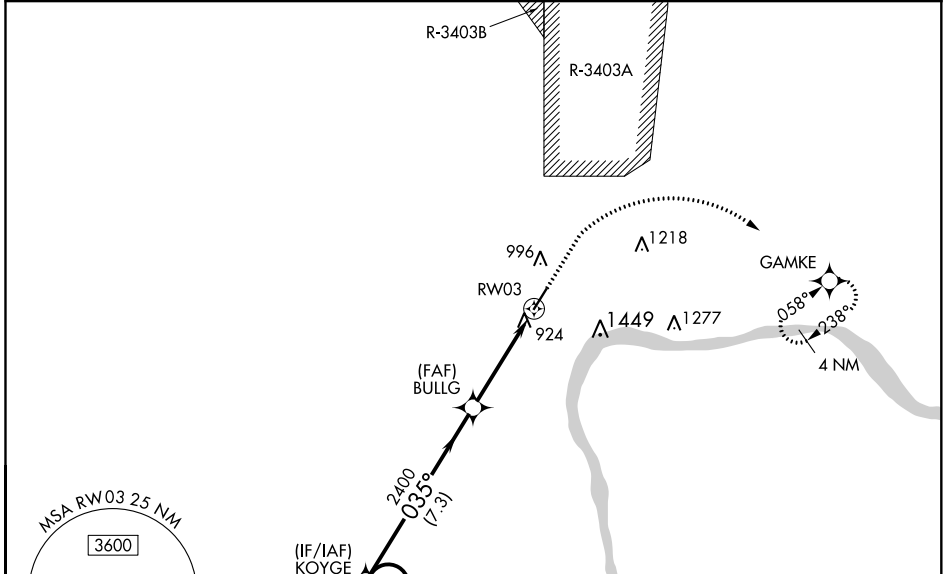
MADISON MUNI (IMS)

**⚠️** **⚠️** **⚠️** For uncompensated Baro-VNAV systems, LNAV/VNAV NA below -16°C (4°F) or above 54°C (130°F). DME/DME RNP-0.3 NA. Rwy 3 helicopter visibility reduction below 3/4 SM NA. For inoperative ALS, increase \*\*LNAV/VNAV all Cats visibility to 7/8 SM. For inoperative ALS when using Bowman Field altimeter setting, increase LPV all Cats visibility to 1 3/8 SM; increase \*\*LNAV/VNAV all Cats visibility to 7/8 SM and LNAV/VNAV all Cats visibility to 2 1/2 SM.

**MALSF** 

**MISSED APPROACH:** Climb to 1300 then climbing right turn to 4000 direct GAMKE and hold, continue climb-in-hold to 4000. \*\*Missed approach requires minimum climb of 410 feet per NM to 1900.

<b>AWOS-3</b> <b>119.175</b>	<b>LOUISVILLE APP CON</b> <b>132.075 327.0</b>	<b>UNICOM</b> <b>123.0 (CTAF) 0</b>
---------------------------------	---	--



CATEGORY	A	B	C	D
LPV DA	1142-3/4	330 (400-3/4)		NA
LNAV/VNAV DA**	1095-3/4	283 (300-3/4)		NA
LNAV/VNAV DA	1420-1 5/8	608 (700-1 5/8)		NA

EC-2, 25 FEB 2021 to 25 MAR 2021

EC-2, 25 FEB 2021 to 25 MAR 2021