

WAAS CH <b>72912</b> <b>W24A</b>	APP CRS <b>246°</b>	Rwy Idg TDZE Apt Elev	<b>3801</b> <b>635</b> <b>635</b>
--	------------------------	-----------------------------	---

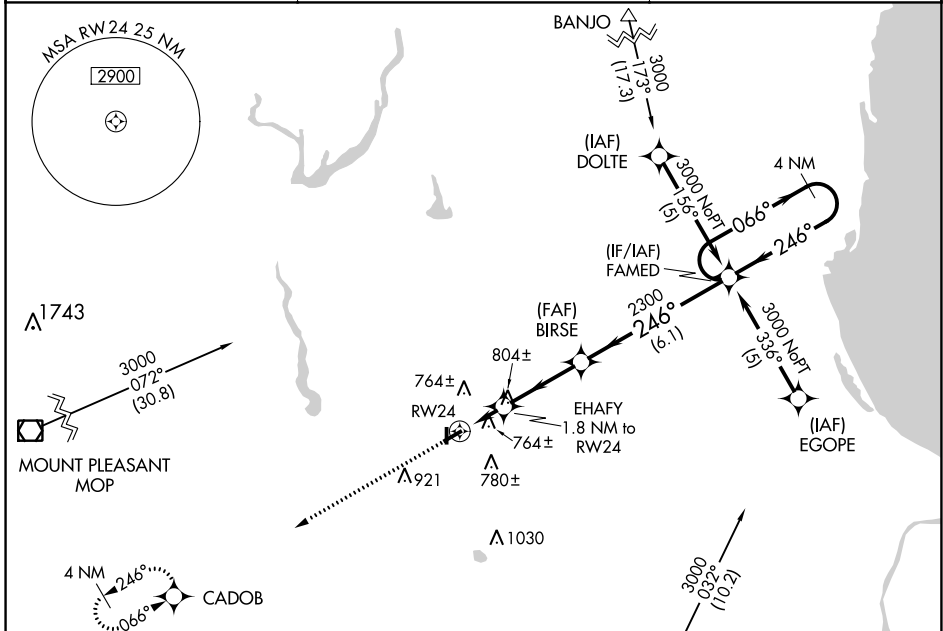
# RNAV (GPS) RWY 24

JACK BARSTOW (IKW)

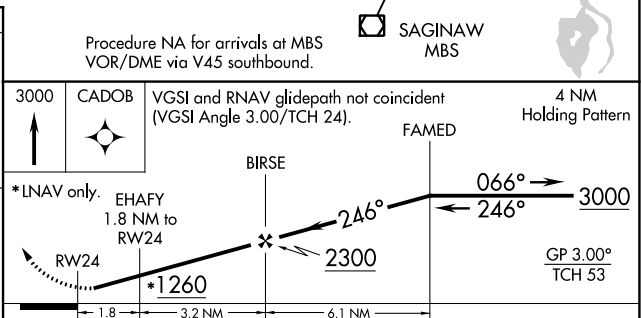
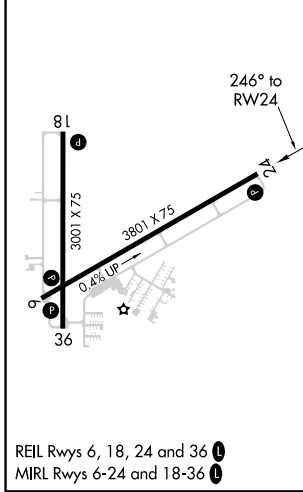
**⚠** Baro-VNAV NA when using MBS Intl altimeter setting. For uncompensated Baro-VNAV systems, LNAV/VNAV NA below -16°C (4°F) or above 54°C (130°F). DME/DME RNP-0.3 NA. Rwy 24 helicopter visibility reduction below 3/4 SM NA. When local altimeter setting not received, use MBS Intl altimeter setting and increase all DA 31 feet and all MDA 40 feet and all LPV visibility 1/4 mile. Circling Rwy 18, 36 NA at night.

**MISSED APPROACH:**  
Climb to 3000 direct CADOB and hold.

AWOS-3 <b>119.525</b>	GREAT LAKES APP CON ★ <b>126.45 235.625</b>	UNICOM <b>122.8 (CTAF) 0</b>
--------------------------	--	---------------------------------



ELEV <b>635</b>	TDZE <b>635</b>
-----------------	-----------------



CATEGORY	A	B	C	D
LPV DA	1021-1¼ 386 (400-1¼)			NA
LNAV/VNAV DA	1068-1½ 433 (500-1½)			NA
LNAV MDA	1060-1	425 (500-1)	1060-1¼ 425 (500-1¼)	NA
CIRCLING	1120-1	485 (500-1)	1120-1½ 485 (500-1½)	NA

EC-1, 25 FEB 2021 to 25 MAR 2021

EC-1, 25 FEB 2021 to 25 MAR 2021