

WAAS CH 62809 W13A	APP CRS 129°	Rwy Idg 4020 TDZE 646 Apt Elev 646
--	------------------------	---

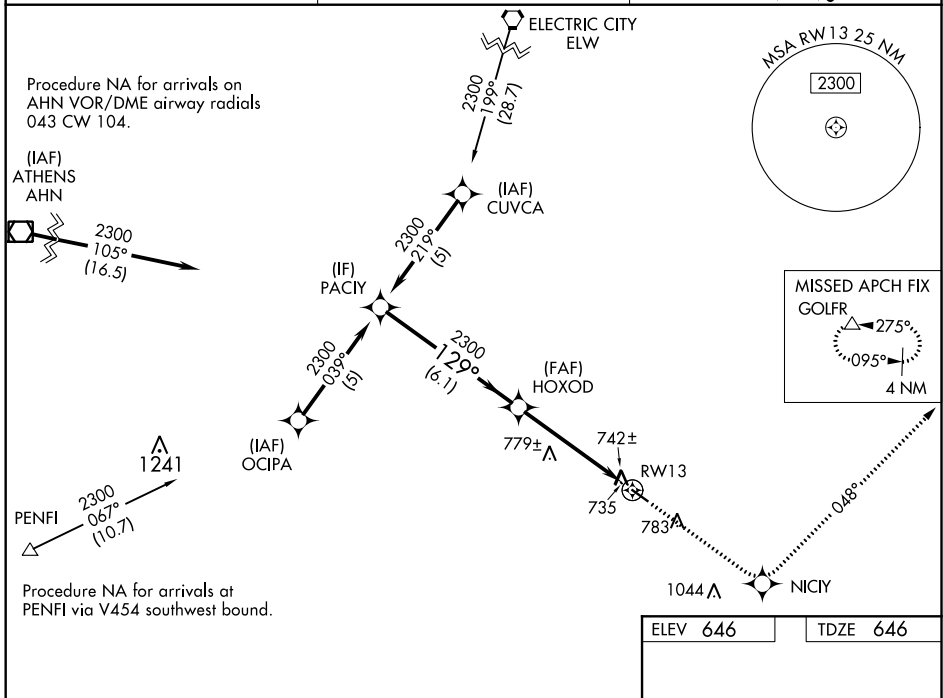
RNAV (GPS) RWY 13

WASHINGTON-WILKES COUNTY (IIY)

⚠ NA Baro-VNAV NA when using Athens altimeter setting. For uncompensated Baro-VNAV systems, LNAV/VNAV NA below -16°C (4°F) or above 47°C (116°F). DME/DME RNP-0.3 NA.
 Visibility reduction by helicopters NA. When local altimeter setting not received, use Athens altimeter setting and increase LPV DA to 1082, LNAV/VNAV DA to 1098, and all MDA 100 feet; increase LPV all Cats visibility ¼ mile, LNAV/VNAV all Cats visibility ½ mile, and LNAV Cat C visibility ¼ mile.

MISSED APPROACH: Climb to 2400 direct NICY and via 048° track to GOLFR and hold.

AWOS-3 118.375	AUGUSTA APP CON★ 126.8 270.3	UNICOM 122.7 (CTAF) 0
--------------------------	--	---------------------------------



ELEV 646		TDZE 646	
PACIY		HOXOD	
2300		2300	
GP 3.00°		RW13	
TCH 33		tr 048°	
6.1 NM		5 NM	
CATEGORY	A	B	D
LPV DA	996-1¼	350 (400-1¼)	NA
LNAV/VNAV DA	1012-1¼	366 (400-1¼)	NA
LNAV MDA	1040-1	394 (400-1)	NA
CIRCLING	1080-1 434 (500-1)	1100-1 454 (500-1)	1100-1½ 454 (500-1½)

MIRL Rwy 13-31 0

SE-4, 25 FEB 2021 to 25 MAR 2021

SE-4, 25 FEB 2021 to 25 MAR 2021