

WAAS CH <b>61303</b> <b>W27A</b>	APP CRS <b>272°</b>	Rwy Idg <b>3395</b> TDZE <b>617</b> Apt Elev <b>620</b>
--	------------------------	---

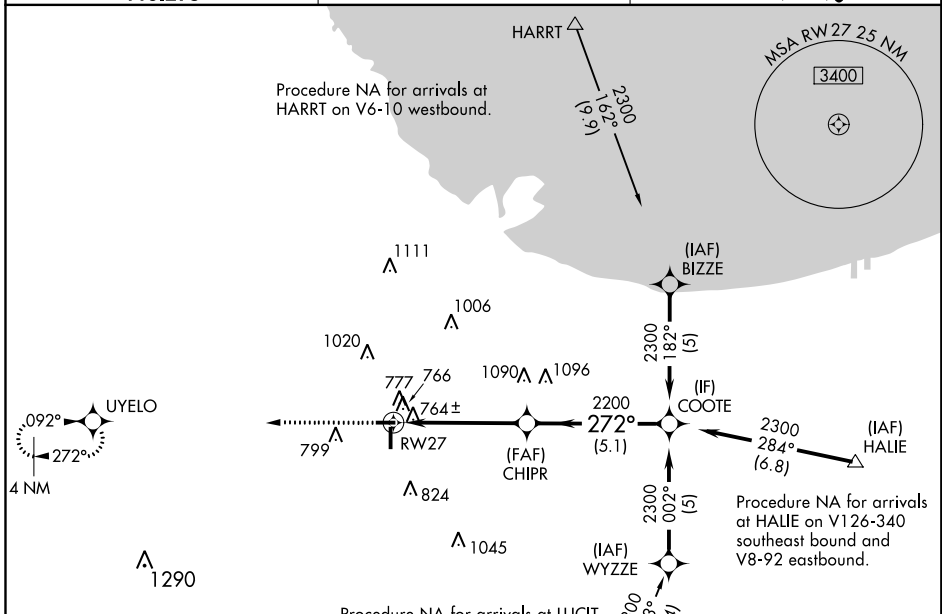
# RNAV (GPS) RWY 27

LANSING MUNI (IGQ)

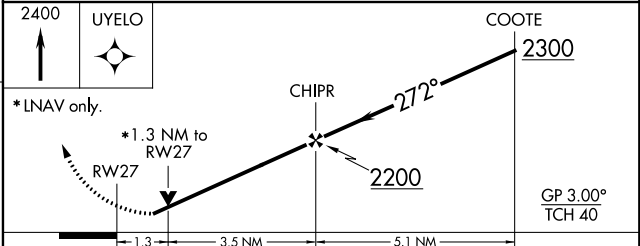
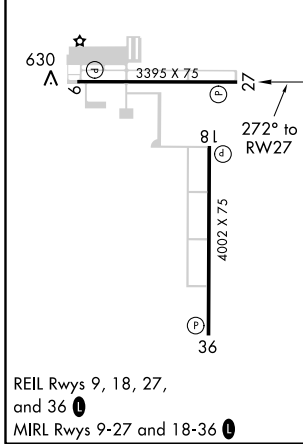
**▼**  
**▲** Baro-VNAV NA when using Chicago Midway Intl altimeter setting. For uncompensated Baro-VNAV systems, LNAV/VNAV NA below -16°C (4°F) or above 54°C (130°F). Rwy 27 helicopter visibility reduction below ¾ SM NA. DME/DME RNP-0.3 NA. VDP NA when using Chicago Midway Intl altimeter setting. When local altimeter setting not received, use Chicago Midway Intl altimeter setting: increase LPV DA to 1058 and LNAV/VNAV DA to 1114 and all MDA 60 feet. Circling Rwy 9 NA at night.

**MISSED APPROACH:**  
Climb to 2400 direct  
UYELO and hold.

AWOS-3 <b>119.275</b>	CHICAGO APP CON <b>128.2 285.6</b>	UNICOM <b>122.7 (CTAF) 0</b>
--------------------------	---------------------------------------	---------------------------------



ELEV 620	TDZE 617
----------	----------



CATEGORY	A	B	C	D
LPV DA	1016-1½	399 (400-1½)		NA
LNAV/VNAV DA	1072-1¾	455 (500-1¾)		NA
LNAV MDA	1080-1	463 (500-1)		NA
CIRCLING	1140-1	520 (600-1)		NA

CHICAGO, ILLINOIS  
Orig-A 30MAR17

41° 32'N-87° 32'W

# RNAV (GPS) RWY 27

EC-3, 25 FEB 2021 to 25 MAR 2021

EC-3, 25 FEB 2021 to 25 MAR 2021