

WAAS CH 82624 W16A	APP CRS 164°	Rwy Idg TDZE Apt Elev	8500 646 707
--	------------------------	-----------------------------	---

RNAV (GPS) RWY 16

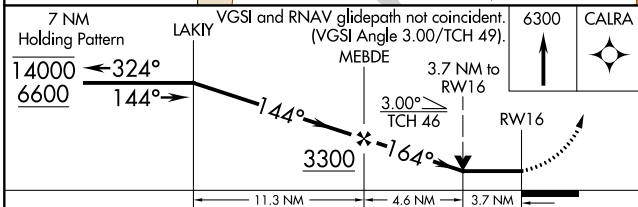
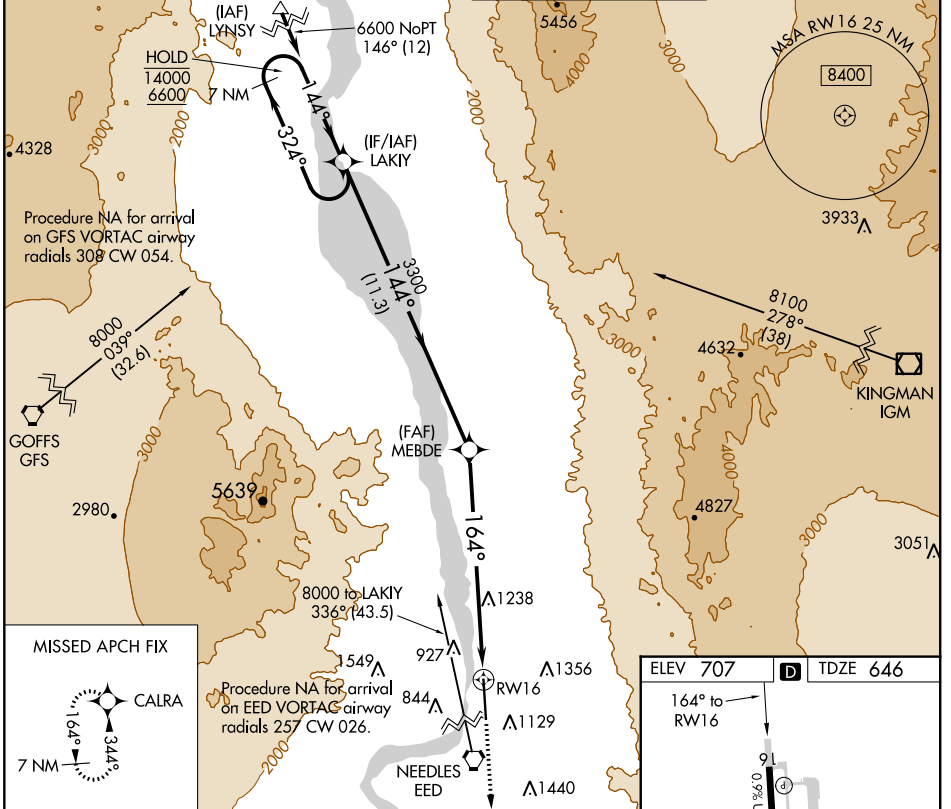
LAUGHLIN/BULLHEAD INTL (IFP)

RNP APCH.

Procedure NA at night.
Rwy 16 helicopter visibility reduction below 3/4 SM NA.

MISSED APPROACH: Climb to 6300 direct CALRA and hold, continue climb-in-hold to 6300.

ATIS ★ 119.825	LOS ANGELES CENTER 134.65 360.65	BULLHEAD TOWER ★ 123.9 (CTAF) 0	GND CON 118.25
--------------------------	--	--	--------------------------



ELEV 707	D	TDZE 646
----------	----------	----------

CATEGORY	A	B	C	D
LP MDA	1860-1¼ 1214 (1200-1¼)	1860-1½ 1214 (1200-1½)	1860-3	1214 (1200-3)
LNAV MDA	1860-1¼ 1214 (1200-1¼)	1860-1½ 1214 (1200-1½)	1860-3	1214 (1200-3)
C CIRCLING	1860-1¼ 1153 (1200-1¼)	1860-1½ 1153 (1200-1½)	1860-3 1153 (1200-3)	2340-3 1633 (1700-3)

REIL Rwy 16 and 34 **0**
MRL Rwy 16-34 **0**

SW-4, 25 FEB 2021 to 25 MAR 2021

SW-4, 25 FEB 2021 to 25 MAR 2021