

APP CRS	Rwy Idg	10301
016°	TDZE	1314
	Apt Elev	1333

RNAV (RNP) Z RWY 1L

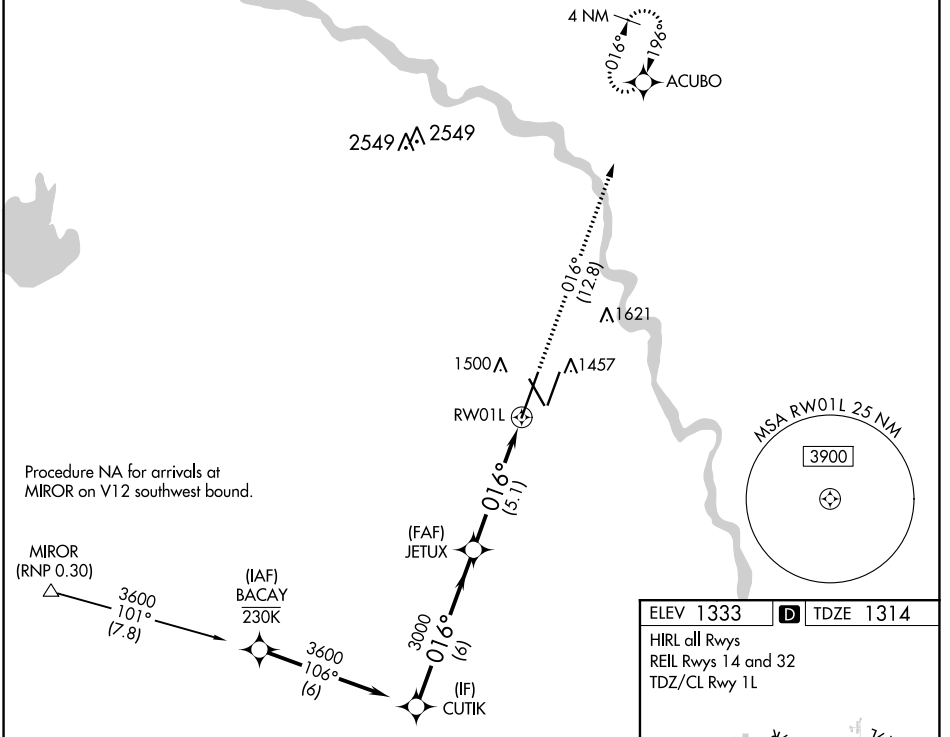
WICHITA DWIGHT D EISENHOWER NATIONAL (ICT)

▼ For uncompensated Baro-VNAV systems, procedure NA below -15°C (5°F) or above 54°C (130°F). For inoperative ALSF, increase RNP 0.15 all Cats visibility to RVR 5000 and RNP 0.30 all Cats visibility to RVR 6000. GPS required. Simultaneous approach authorized with ILS or LOC RWY 1R. Use of FD or AP providing RNAV track guidance required during simultaneous operations.

ALSF-2

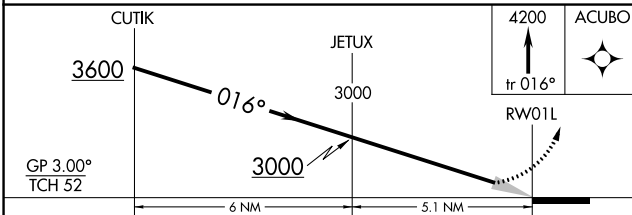
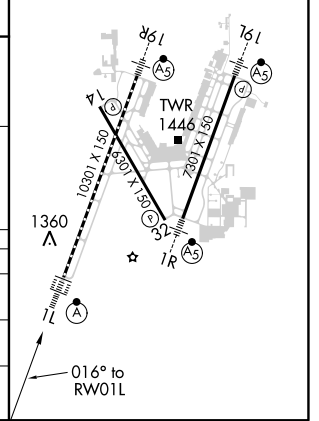
MISSED APPROACH:
Climb to 4200 on track 016° to ACUBO and hold.

ATIS 125.15	WICHITA APP CON 126.7 353.5	WICHITA TOWER 118.2 257.8	GND CON 121.9 348.6	CLNC DEL 125.7
-----------------------	---------------------------------------	-------------------------------------	-------------------------------	--------------------------



ELEV 1333	D TDZE 1314
-----------	--------------------

HIRL all Rwys
REIL Rwys 14 and 32
TDZ/CL Rwy 1L



CATEGORY	A	B	C	D
RNP 0.15 DA		1626/27	312 (300-3%)	
RNP 0.30 DA		1676/35	362 (400-3%)	

AUTHORIZATION REQUIRED

NC-2, 25 FEB 2021 to 25 MAR 2021

NC-2, 25 FEB 2021 to 25 MAR 2021