

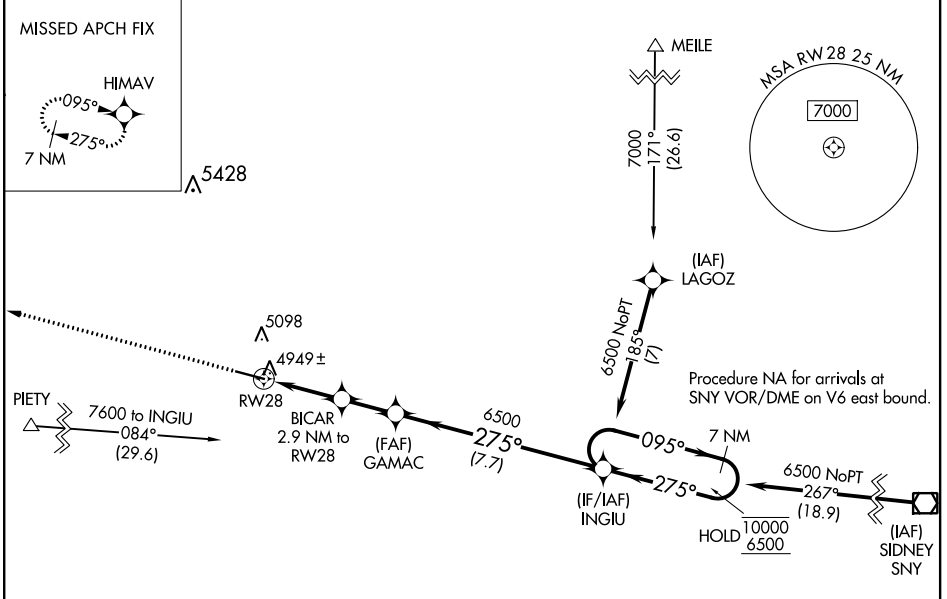
WAAS CH <b>42503</b> <b>W28A</b>	APP CRS <b>275°</b>	Rwy Idg <b>6199</b> TDZE <b>4908</b> Apt Elev <b>4926</b>
--	------------------------	---

# RNAV (GPS) RWY 28

KIMBALL MUNI/ROBERT E ARRAJ FIELD (IBM)

RNP APCH.	MISSED APPROACH: Climb to 7000 direct HIMAV and hold.
<p>▼ For uncompensated Baro-VNAV systems, LNAV/VNAV NA below -24°C or above 54°C.</p> <p>▲ Circling Rwy 10 NA at night.</p>	

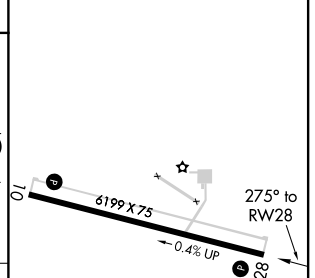
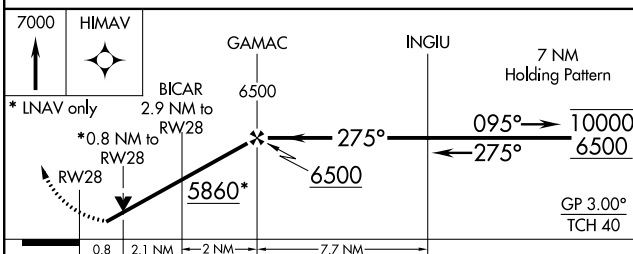
AWOS-3 <b>118.075</b>	DENVER CENTER <b>125.9 284.7</b>	UNICOM <b>122.8 (CTAF)</b>
--------------------------	-------------------------------------	-------------------------------



NC-2, 25 FEB 2021 to 25 MAR 2021

NC-2, 25 FEB 2021 to 25 MAR 2021

ELEV 4926	TDZE 4908
-----------	-----------



CATEGORY	A	B	C	D
LPV DA		5158-1	250 (300-1)	
LNAV/VNAV DA		5158-1	250 (300-1)	
LNAV MDA		5200-1	292 (300-1)	
CIRCLING	5280-1 354 (400-1)	5460-1 534 (600-1)	5460-1½ 534 (600-1½)	5480-2 554 (600-2)

REIL Rwys 10 and 28  
MRL Rwy 10-28