

D-ATIS  
 124.05  
 CLNC DEL  
 128.1  
 CPDLC  
 GND CON  
 118.575 (Rwys 8L/R, 26L/R, 9/27)  
 121.7 (Rwys 15L/R, 33L/R)  
 HOUSTON TOWER  
 120.725 290.2 (Rwys 8L/26R)  
 125.35 290.2 (Rwys 8R/26L)  
 127.3 288.25 (Rwys 15L/R, 33L/R)  
 135.15 290.2 (Rwys 9/27)  
 HOUSTON DEP CON  
 132.25 285.425

**TOP ALTITUDE:  
 16000**

NOTE: RADAR required.  
 NOTE: DME/DME/IRU or GPS required.  
 NOTE: RNAV 1.

TAKEOFF MINIMUMS

Rwys 8L/R, 9, 15L/R, 26L/R, 27, 33L/R:  
 Standard with minimum climb of 500' per NM to 600.

**▼ DEPARTURE ROUTE DESCRIPTION**

TAKEOFF RWYS 8L/R, 9: Climb heading 087° to 600 for RADAR vectors to WYLSN, thence. . .

TAKEOFF RWYS 15L/R: Climb heading 149° to 600 for RADAR vectors to WYLSN, thence. . .

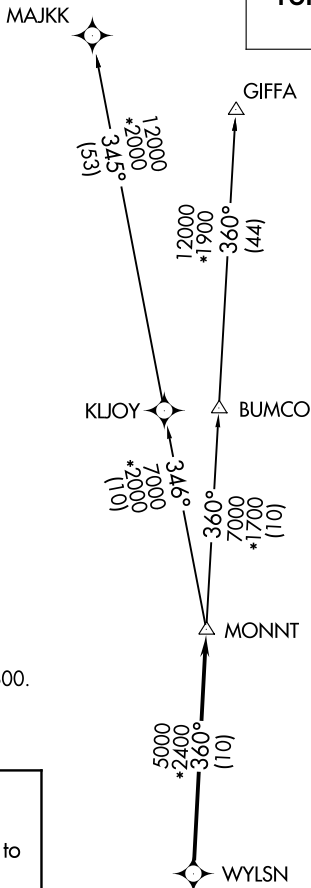
TAKEOFF RWYS 26L/R, 27: Climb heading 267° to 600 for RADAR vectors to WYLSN, thence. . .

TAKEOFF RWYS 33L/R: Climb heading 329° to 600 for RADAR vectors to WYLSN, thence. . .

. . . on track 360° to MONNT, then on (transition).  
 Maintain 16000 or as assigned by ATC. Expect filed altitude 10 minutes after departure.

GIFFA TRANSITION (WYLSN7.GIFFA)

MAJKK TRANSITION (WYLSN7.MAJKK)



NOTE: Chart not to scale.