


WAAS CH 97726 W26A	APP CRS 267°	Rwy Idg TDZE 96 Apt Elev 96	9000
--	------------------------	---	-------------

RNAV (GPS) Z RWY 26R

GEORGE BUSH INTERCONTINENTAL/HOUSTON (IAH)

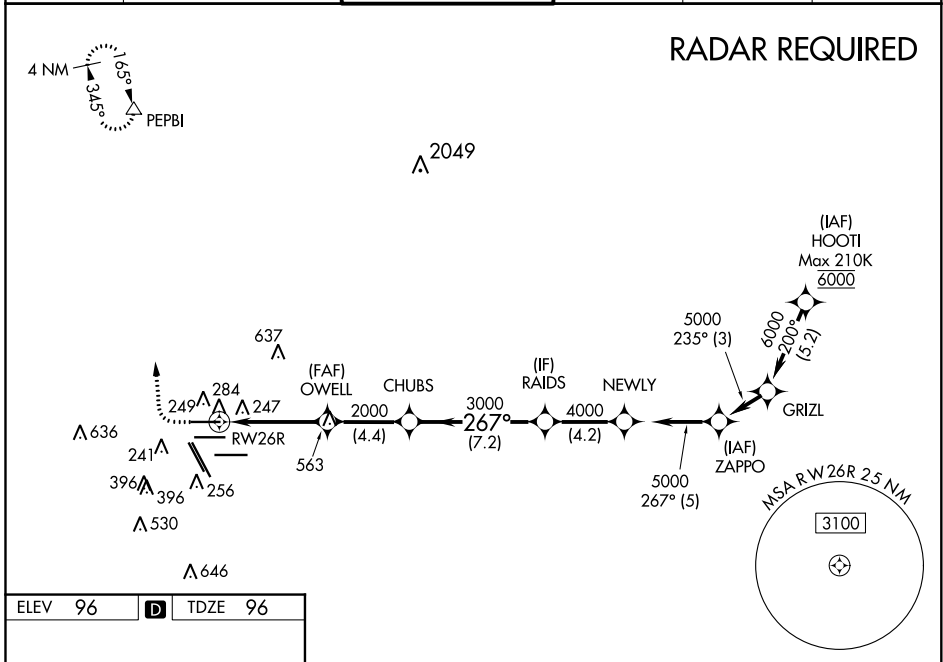
▼ For uncompensated Baro-VNAV systems, LNAV/VNAV NA below -3°C (27°F) or above 54°C (130°F). For inop ALSF, increase LPV Cat E visibility to RVR 4000, LNAV/VNAV all Cats visibility to 1½, and LNAV Cat C/D/E visibility to 1¾. DME/DME RNP-0.3 NA. Simultaneous approach authorized with Rwy 26L and Rwy 27. LNAV procedure NA during simultaneous operations. Use of FD or AP providing RNAV track guidance required during simultaneous operations.

ALSF-2



MISSED APPROACH: Climb to 600 then climbing right turn to 3000 direct PEPBI and hold.

D-ATIS 124.05	HOUSTON APP CON 120.05 379.1 EAST 124.35 316.15 WEST	HOUSTON TOWER 120.72 290.2	GND CON 121.7	CLNC DEL 128.1	CPDLC
-------------------------	--	--------------------------------------	-------------------------	--------------------------	-------



ELEV 96	D	TDZE 96
---------	----------	---------

TDZ/CL Rws 8R, 8L, 15R, 26R, 26L, 27 and 33L
HIRL all Rws

	600	3000	PEPBI						
	↑	↷	△						
*LNAV only									
	RW26R	OWELL	CHUBS	RAIDS	NEWLY	ZAPPO			
	1.4	2000	3000	4000	5000	5000	267°	5000	
	*1.4 NM to RW26R								GP 3.00° TCH 59
	1.4	4.4	4.4	7.2	4.2	5			
CATEGORY	A	B	C	D	E				
LPV DA	DA	296/18		200 (200-½)					
LNAV/VNAV DA	DA	496/42		400 (400-¾)					
LNAV MDA	600/24	504 (600-½)	600/55		504 (600-1)				

SC-5, 25 FEB 2021 to 25 MAR 2021

SC-5, 25 FEB 2021 to 25 MAR 2021