

JUNCTION ONE DEPARTURE

D-ATIS 124.05
 CLNC DEL 128.1
 CPDLC
 HOUSTON DEP CON
 126.675 339.8
 GND CON
 118.575 (Rwys 8L/R, 26L/R, 9/27)
 121.7 (Rwys 15L/R, 33L/R)
 HOUSTON TOWER
 120.725 290.2 (Rwys 8L/26R)
 125.35 290.2 (Rwys 8R/26L)
 127.3 288.25 (Rwys 15L/R, 33L/R)
 135.15 290.2 (Rwys 9/27)

**TOP ALTITUDE:
16000**

JUNCTION
 116.0 JCT
 Chan 107
 N30°35.88'
 W99°49.05'
 L-19, H-7

SPURS
 N30°24.32'
 W98°20.98'

PUFER
 N30°13.44'
 W97°04.53'

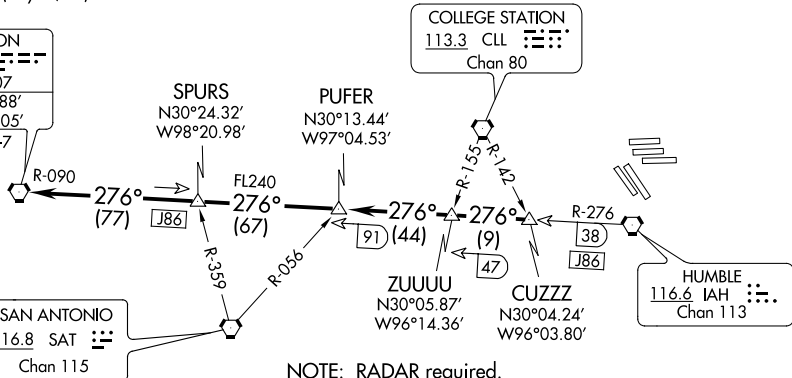
COLLEGE STATION
 113.3 CLL
 Chan 80

SAN ANTONIO
 116.8 SAT
 Chan 115

ZUUUU
 N30°05.87'
 W96°14.36'

CUZZZ
 N30°04.24'
 W96°03.80'

HUMBLE
 116.6 IAH
 Chan 113



NOTE: RADAR required.

NOTE: For aircraft overflying JCT VORTAC on J86 filing FL240 or above.

TAKEOFF MINIMUMS

Rwys 8L/R, 9, 15L/R, 26L/R, 27, 33L/R: Standard.

NOTE: Chart not to scale.



DEPARTURE ROUTE DESCRIPTION

TAKEOFF ALL RUNWAYS: Climb on assigned heading for RADAR vectors to CUZZZ INT. Maintain 16000. Expect filed altitude 10 minutes after departure. Thence

. . . . on IAH R-276 and JCT R-090 to JCT VORTAC.

SC-5, 25 FEB 2021 to 25 MAR 2021

SC-5, 25 FEB 2021 to 25 MAR 2021