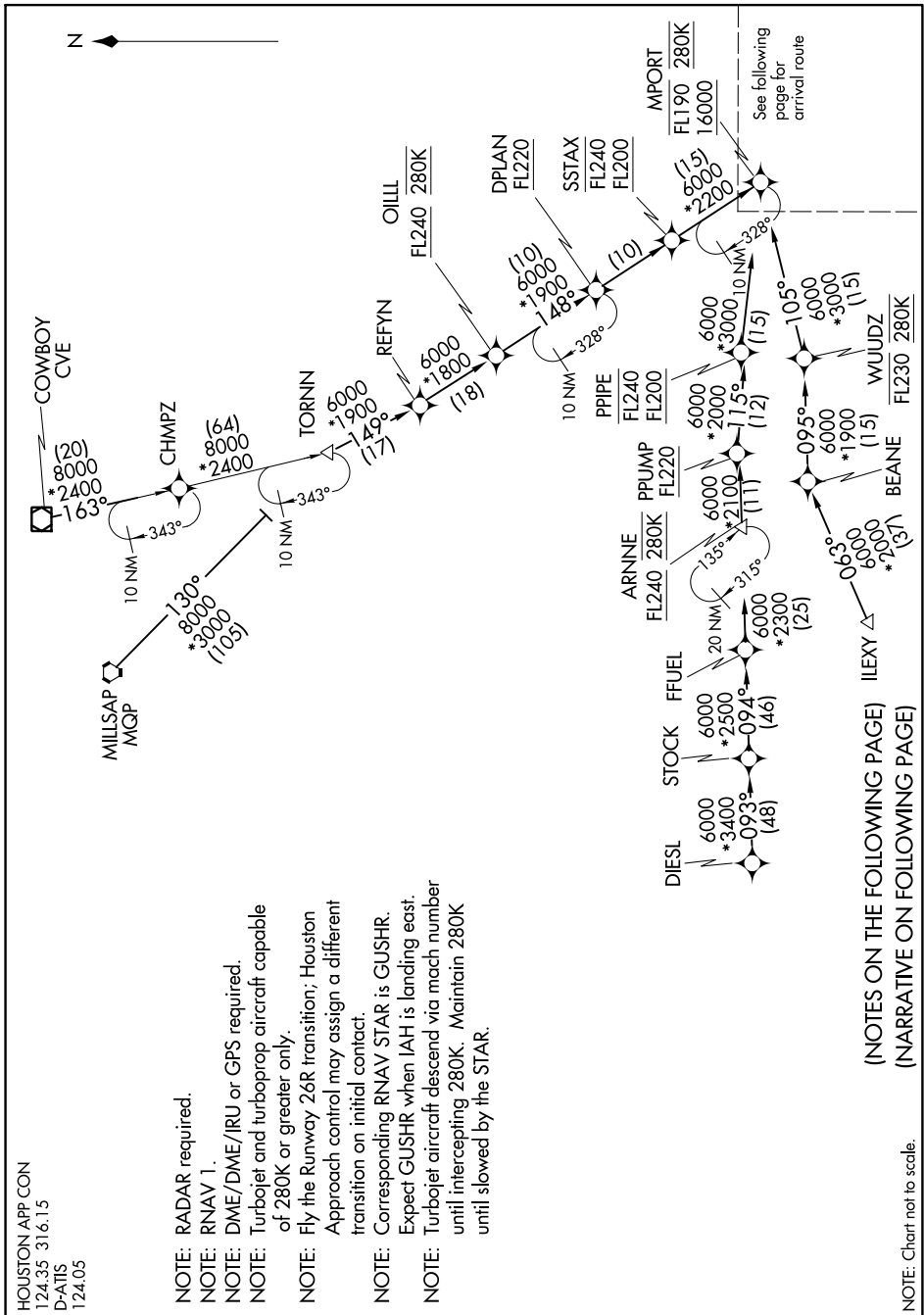


SC-5, 25 FEB 2021 to 25 MAR 2021



- NOTE: RADAR required.
- NOTE: RNAV 1.
- NOTE: DME/DME/IRU or GPS required.
- NOTE: Turbojet and turboprop aircraft capable of 280K or greater only.
- NOTE: Fly the Runway 26R transition; Houston Approach control may assign a different transition on initial contact.
- NOTE: Corresponding RNAV STAR is GUSHR.
- NOTE: Expect GUSHR when IAH is landing east.
- NOTE: Turbojet aircraft descend via mach number until intercepting 280K. Maintain 280K until slowed by the STAR.

(NOTES ON THE FOLLOWING PAGE)  
 (NARRATIVE ON FOLLOWING PAGE)

NOTE: Chart not to scale.

SC-5, 25 FEB 2021 to 25 MAR 2021