

(BLTWY6.BLTWY) 19115

GEORGE BUSH INTERCONTINENTAL/HOUSTON (IAH)

BLTWY SIX DEPARTURE (RNAV)

AL-5461 (FAA)

HOUSTON, TEXAS

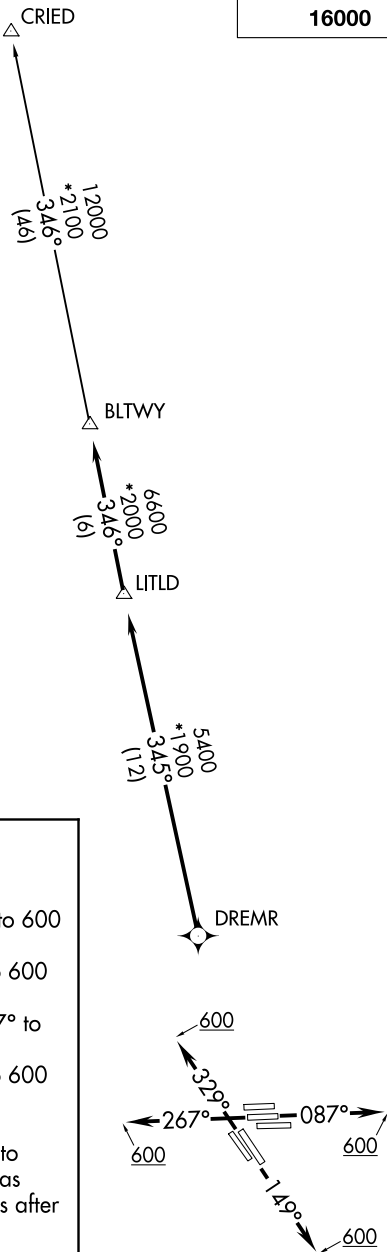
D-ATIS
 124.05
 CLNC DEL
 128.1
 CPDLC
 GND CON
 118.575 (Rwys 8L/R, 26L/R, 9/27)
 121.7 (Rwys 15L/R, 33L/R)
 HOUSTON TOWER
 120.725 290.2 (Rwys 8L/26R)
 125.35 290.2 (Rwys 8R/26L)
 127.3 288.25 (Rwys 15L/R, 33L/R)
 135.15 290.2 (Rwys 9/27)
 HOUSTON DEP CON
 132.25 285.425

**TOP ALTITUDE:
 16000**

NOTE: RADAR required.
 NOTE: DME/DME/IRU or GPS required.
 NOTE: RNAV 1.

TAKEOFF MINIMUMS

Rwys 8L/R, 9, 15L/R, 26L/R, 27, 33L/R:
 Standard with minimum climb of 500' per NM to 600.



DEPARTURE ROUTE DESCRIPTION

TAKEOFF RWYS 8L/R, 9: Climb heading 087° to 600 for RADAR vectors to DREMR, thence

TAKEOFF RWYS 15L/R: Climb heading 149° to 600 for RADAR vectors to DREMR, thence

TAKEOFF RWYS 26L/R, 27: Climb heading 267° to 600 for RADAR vectors to DREMR, thence

TAKEOFF RWYS 33L/R: Climb heading 329° to 600 for RADAR vectors to DREMR, thence

. . . . on track 345° to LITLD, then on track 346° to BLTWY, then on (transition). Maintain 16000 or as assigned by ATC. Expect filed altitude 10 minutes after departure.

CRIED TRANSITION (BLTWY6.CRIED)

NOTE: Chart not to scale.

SC-5, 25 FEB 2021 to 25 MAR 2021

SC-5, 25 FEB 2021 to 25 MAR 2021

BLTWY SIX DEPARTURE (RNAV)

HOUSTON, TEXAS

(BLTWY6.BLTWY) 25APR19

GEORGE BUSH INTERCONTINENTAL/HOUSTON (IAH)