

WAAS CH 97333 W24B	APP CRS 240°	Rwy ldg TDZE Apt Elev	5108 592 592
----------------------------------------	------------------------	-----------------------------	-----------------------------------------

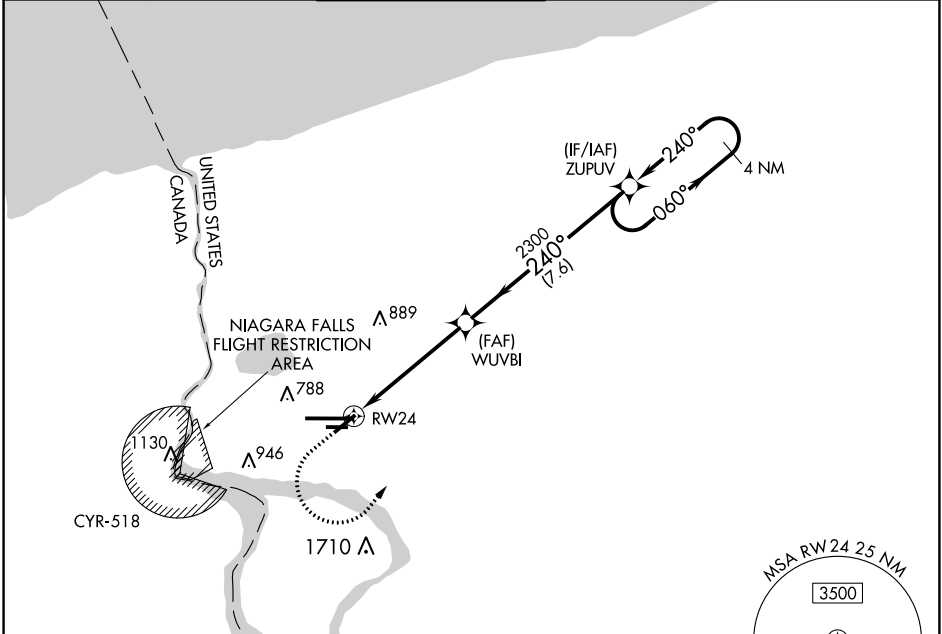
RNAV (GPS) Y RWY 24

NIAGARA FALLS INTL (IAG)

▽ DME/DME RNP-0.3 NA. When local altimeter setting not received, use Buffalo Niagara Intl altimeter setting and increase all MDA 60 feet and increase LP Cats C and D visibility 1/8 mile and Circling Cats A and D visibility 1/4 mile. Rwy 6, 10R, 24, 28L helicopter visibility reduction below 1 SM NA. Straight-in Rwy 24 NA at night, Circling Rwy 6, 10R, 24, 28L NA at night.

▲ MISSED APPROACH: Climb to 1400 then climbing left turn to 3600 direct ZUPOV and hold.

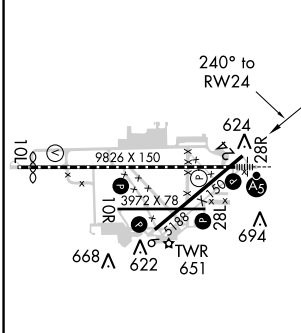
ATIS 120.8 269.4	BUFFALO APP CON 126.5 317.6	NIAGARA TOWER★ 118.5 (CTAF) 0 349.0	GND CON 125.3 275.8	CINC DEL 119.25 251.1	UNICOM 122.95
----------------------------	---------------------------------------	-----------------------------------------------	-------------------------------	---------------------------------	-------------------------



NE-2, 25 FEB 2021 to 25 MAR 2021

NE-2, 25 FEB 2021 to 25 MAR 2021

ELEV 592	D	TDZE 592
----------	----------	----------



		CATEGORY		A	B	C	D
		LP	MDA	1180-1	588 (600-1)	1180-1¾	588 (600-1¾)
		LNAV MDA		1360-1 768 (800-1)	1360-1¼ 768 (800-1¼)	1360-2½	768 (800-2½)
		CIRCLING		1360-1 768 (800-1)	1360-1¼ 768 (800-1¼)	1360-2½	768 (800-2½)

TDZ/CL Rwy 28R
REIL Rws 6, 10R, 24, and 28L
HIRL Rwy 10L-28R
MIRL Rws 6-24 and 10R-28L