

WAAS CH <b>66034</b> <b>W10A</b>	APP CRS <b>120°</b>	Rwy ldg TDZE <b>589</b> Apt Elev <b>592</b>
--	------------------------	---

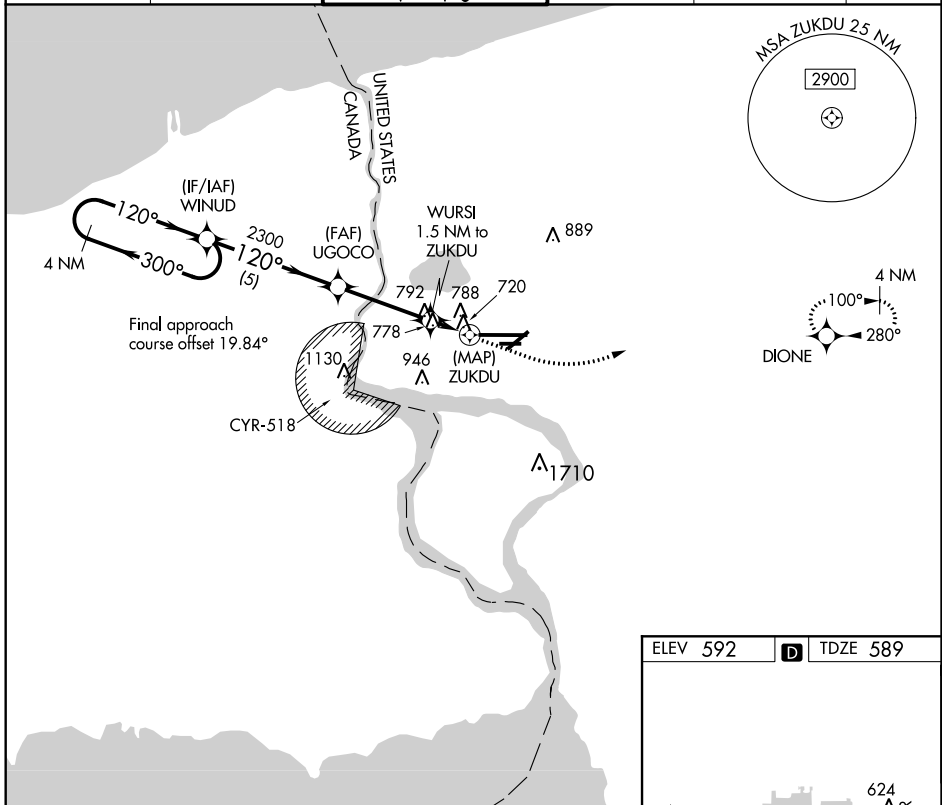
# RNAV (GPS) RWY 10L

NIAGARA FALLS INTL (IAG)

**⚠** DME/DME RNP-0.3 NA. VDP NA with Buffalo Niagara Intl altimeter setting. When local altimeter setting not received, use Buffalo Niagara Intl altimeter setting and increase all MDA 60 feet.  
**⚠** Increase LP Cats C/D and Circling Cats C/D visibility ¼ mile. Rwy 10L helicopter visibility reduction below ¾ SM NA. Circling Rwy 6, 10R, 24, 28L helicopter visibility reduction below 1 SM NA.  
 Circling Rwy 6, 10R, 24, 28L NA at night.

**MISSED APPROACH:** Climb to 1100 then climbing left turn to 3600 direct DIONE and hold.

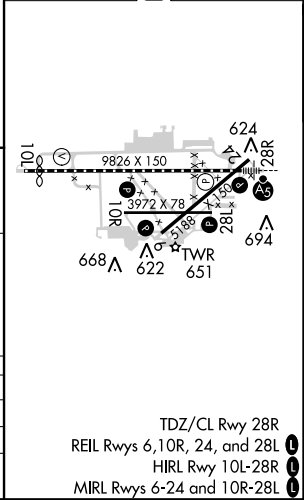
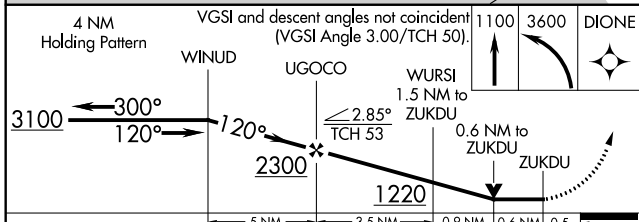
ATIS <b>120.8 269.4</b>	BUFFALO APP CON <b>126.5 317.6</b>	NIAGARA TOWER * <b>118.5 (CTAF) 0 349.0</b>	GND CON <b>125.3 275.8</b>	CLNC DEL <b>119.25 251.1</b>	UNICOM <b>122.95</b>
----------------------------	---------------------------------------	--	-------------------------------	---------------------------------	-------------------------



NE-2, 25 FEB 2021 to 25 MAR 2021

NE-2, 25 FEB 2021 to 25 MAR 2021

ELEV 592	<b>D</b>	TDZE 589
----------	----------	----------



CATEGORY	A	B	C	D
LP MDA	980-1	391 (400-1)	980-1½	391 (400-1½)
LNAY MDA	1040-1	451 (500-1)	1040-1¾	451 (500-1¾)
<b>C</b> CIRCLING	1100-1	508 (600-1)	1280-2	1280-2¼
			688 (700-2)	688 (700-2¼)

TDZ/CL Rwy 28R  
 REIL Rws 6, 10R, 24, and 28L  
 HIRL Rwy 10L-28R  
 MRL Rws 6-24 and 10R-28L