

WICHITA, KANSAS

TACAN RWY 1R

TACAN IAB Chan 112	APCH CRS 005°	Rwy Idg TDZE Arpt Elev	12,007 1347 1372
-----------------------	------------------	------------------------------	------------------------

AL-453 (USAF)

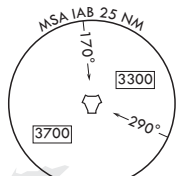
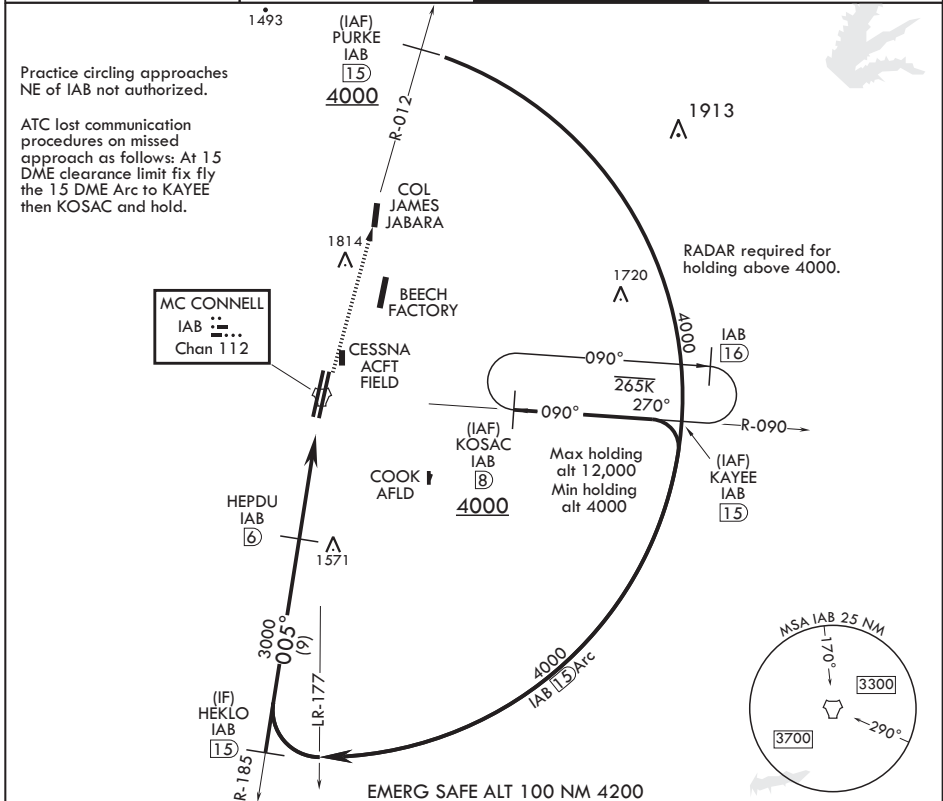
MC CONNELL AFB (KIAB)

SSALR MISSED APPROACH: Climb to 4000 via IAB TACAN R-012 to PURKE. Expect further clearance from ATC.

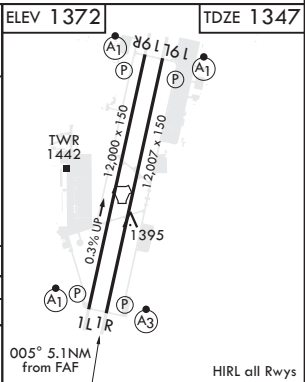
AS

* When ALS inop, increase CAT AB RVR to 55 and vis to 1 mile, CAT CDE vis to 1 1/4 miles.
 ** Circling not authorized W of Rwy 1L-19R.

D ATIS 124.65 269.9	WICHITA APP CON 134.8 269.1	TOWER 127.25 291.775	GND CON 118.0 275.8
------------------------	--------------------------------	-------------------------	------------------------



HEKLO IAB (15)	HEPDU IAB (6)	TACAN	WOVIL IAB (1.6)	4000 IAB R-012	ELEV 1372	TDZE 1347
4000	3000	3000	2	4000		
005°	2.96° > TCH 64	4.4 NM	0.7			
CATEGORY	A	B	C	D	E	
S-1R*	1760/40		413	(400-3/4)		
CIRCLING**	1900-1 528 (600-1)	1900-1 1/2 528 (600-1 1/2)	2400-3 1028 (1100-3)			
005° 5.1NM from FAF						HIRL all Rws



WICHITA, KANSAS
Amdt 6 10SEP20

37°37'N - 97°16'W

MC CONNELL AFB (KIAB)
TACAN RWY 1R

NC-2, 25 FEB 2021 to 25 MAR 2021

NC-2, 25 FEB 2021 to 25 MAR 2021