

TACAN RWY 19R

TACAN IAB Chan 112	APCH CRS 186°	Rwy Ldg 12,000 TDZE 1372 Arprt Elev 1372
-----------------------	------------------	--

AL-453 [USAF]

MC CONNELL AFB (KIAB)

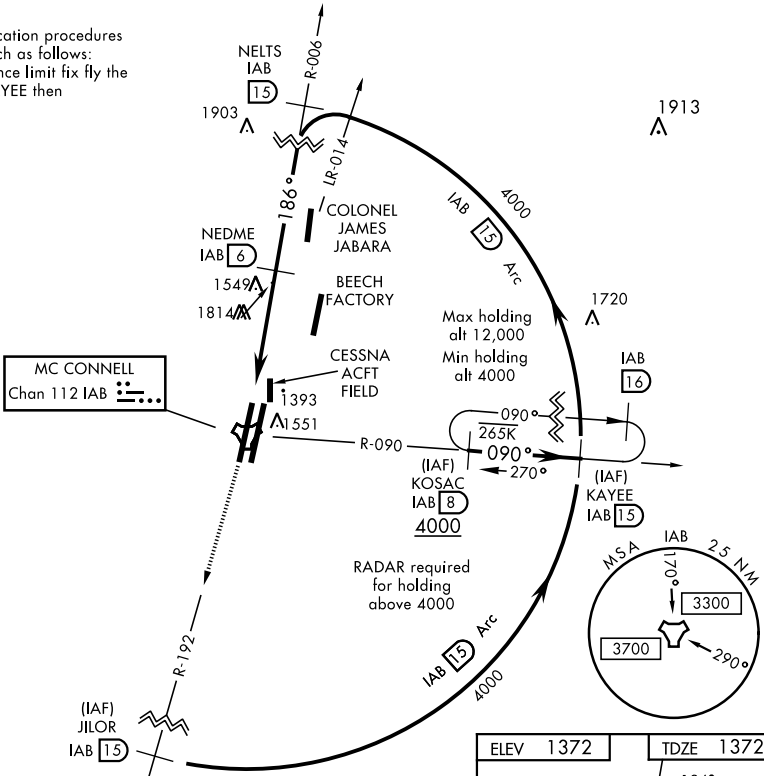
▼ * When ALS inop, increase CAT AB RVR to 55 and vis to 1 mile, CAT CDE vis to 1 3/8 miles.
 ** Circling not authorized W of Rwy 1L-19R.

ALSF-1
(A1)

MISSED APPROACH: Climb to 4000 via IAB TACAN R-192 to 15 DME (JILOR). Expect further clearance from ATC.

D-ATIS 124.65 269.9	WICHITA APP CON 134.8 269.1	MC CONNELL TOWER 127.25 291.775	GND CON 118.0 275.8
-------------------------------	---------------------------------------	---	-------------------------------

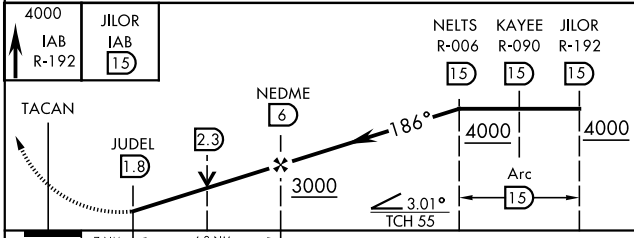
ATC lost communication procedures on missed approach as follows:
 At 15 DME clearance limit fix fly the 15 DME Arc to KAYEE then KOSAC and hold.



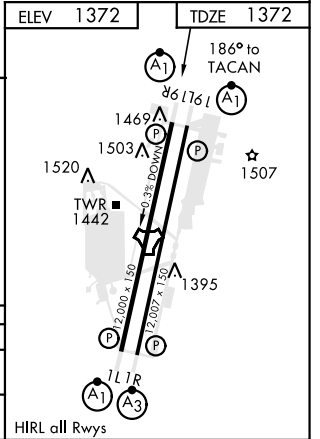
NC-2, 25 FEB 2021 to 25 MAR 2021

NC-2, 25 FEB 2021 to 25 MAR 2021

EMERG SAFE ALT 100 NM 4200



CATEGORY	A	B	C	D	E
S-19R *	1820/24 448 (500-1/2)		1820/45 448 (500-3/8)		
CIRCLING **	1900-1 528 (600-1)		1900-1 1/2 528 (600-1 1/2)	2400-3 1028 (1100-3)	



WICHITA, KANSAS
 Amdt 5 10SEP20

37°37'N-97°16'W

MC CONNELL AFB (KIAB)

TACAN RWY 19R